

DK-4/8 组合型插芯 Combination Inserts 400V/400V 80A/16A 4/8+⊕

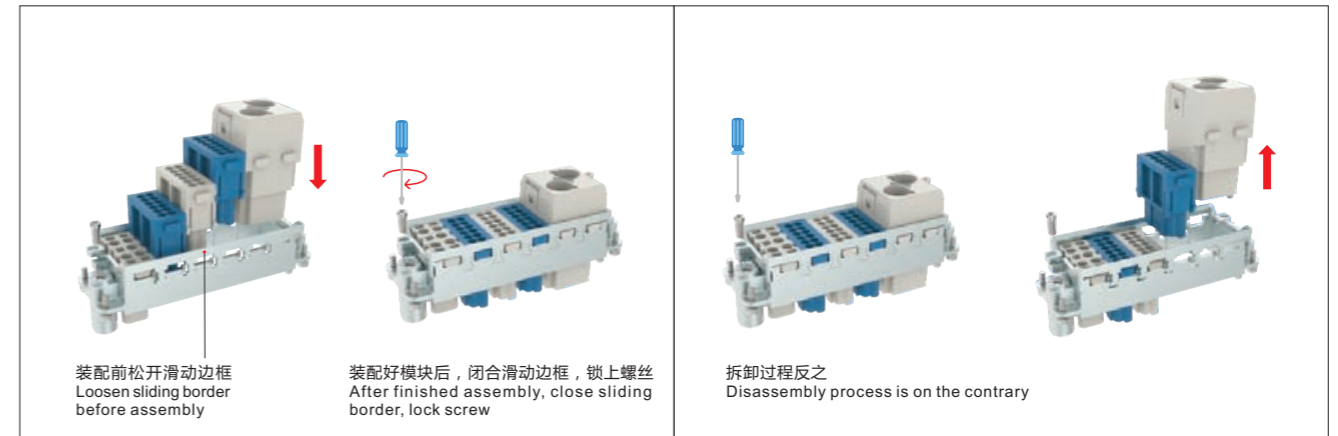
外壳尺寸：匹配24B外壳，请参考P110-115页 Hoods/Housings: Matching 24B Hoods Housing, detail on P110-115

插芯 Inserts	公 Male	母 Female	线规 Wire gauge		图纸 Drawing
			mm ²	AWG	
<p>螺丝连接 Screw terminal</p>	DK-4/8-M	DK-4/8-F	1.5-16 0.75-2.5	(16-6) 18-14	<p>接插体之间的最大距离21mm Distance for contact max.21mm</p> <p>接插针排序 Contacts arrangement view for termination side</p> <p>面孔安装开孔图 Panel cut out for use without Hoods/housings</p>

DF 模块框架 Hinged Frames

装配示意图 Assembly instruction

拆卸示意图 Disassembly instruction



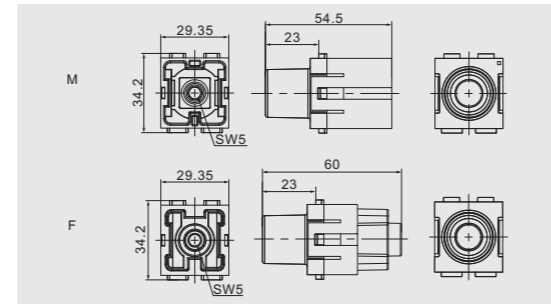
框架类型 Frame Version

6B活动框架 适用于所有6B外壳 6B frame, size 6B hoods/housings				规格尺寸 Dimension
	型号 Type	标示 Marking	描述 Description	
	DF6B-UA DF6B-LA	A-B a-b	For 2 modules For 2 modules	
	型号 Type	标示 Marking	描述 Description	
	DF10B-UA DF10B-LA	A-C a-c	For 3 modules For 3 modules	
	型号 Type	标示 Marking	描述 Description	
	DF16B-UA DF16B-LA	A-D a-d	For 4 modules For 4 modules	
	型号 Type	标示 Marking	描述 Description	
	DF24B-UA DF24B-LA	A-F a-f	For 6 modules For 6 modules	

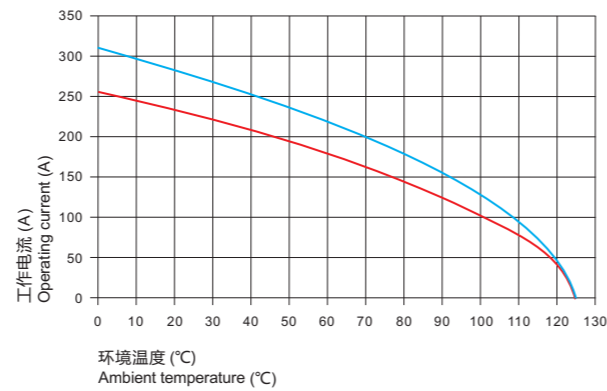
D2MK-001 轴向压接型模块 Axial Module 1000V 200A

 D2MK-001-M(25-40mm²)
 D2MK-001-M(40-70mm²)

 D2MK-001-F(25-40mm²)
 D2MK-001-F(40-70mm²)

 尺寸图及孔位图
 Dimension and hole site

技术参数 Technical characteristics

规范 Specifications	DIN EN 60 664 DIN EN 61 984
插芯 Inserts	
依据EN 61 984的额定电压 Electrical data acc.to EN 61 984	
接插件针数 Number of contacts	1
• 额定电流 Rated current	200A
• 额定电压 Rated voltage	1000V
• 额定脉冲电压 Rated impulse voltage	8KV
• 污染程度 Pollution degree	3
依据UL额定电压 Rated voltage acc.to UL	600V
绝缘电阻 Insulation resistance	≥ 10 ¹⁰ Ω
材料 Material	聚碳酸酯 Polycarbonate
工作温度范围 Limiting temperatures	-40 °C ~+125 °C
依据UL94阻燃等级 Flammability acc.to UL94	V0
可拔插次数 Mechanical working life-mating cycles	≥ 500
插针 Contacts	
材料 Material	铜合金 Copper alloy
表面处理 Surface	镀银 Hard-silver plated
接触电阻 Contact resistance	≤ 0.2m Ω
电缆绞线依据IEC 60 228-5 To IEC 60 228 Class 5	
轴向螺栓连接 Axial screw terminal	
• mm ²	25-70mm ²
• AWG	2-0
• 内六角扳手 Hexagonal Driver	SW5
• 剥线长度 Stripping length	16mm
• 拧紧力矩 Tightening torque	
• mm ²	25 35 50 70
• Nm	8 8 9 10

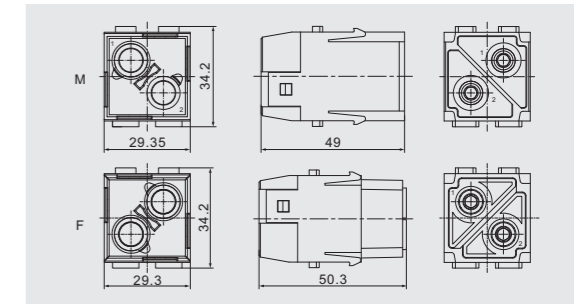


— 24B外壳带3个模块, 导线截面:70mm²
 — 24B外壳带3个模块, 导线截面:50mm²
 — 24 B hoods/housings with 3 modules, wire gauge:70mm²
 — 24 B hoods/housings with 3 modules, wire gauge:50mm²

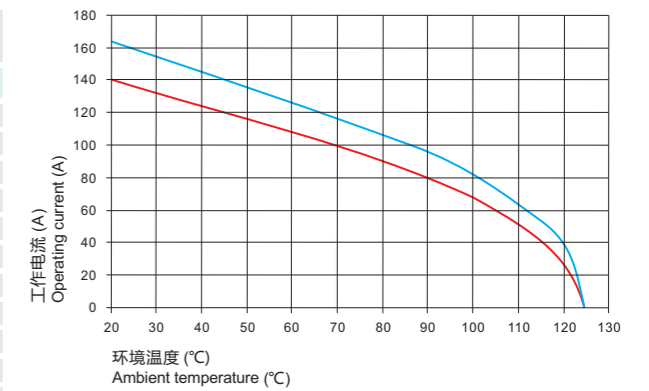
D2MK-002 轴向压接型模块 Axial Module 1000V 100A

 D2MK-002-M(10-25mm²)
 D2MK-002-M(16-35mm²)

 D2MK-002-F(10-25mm²)
 D2MK-002-F(16-35mm²)

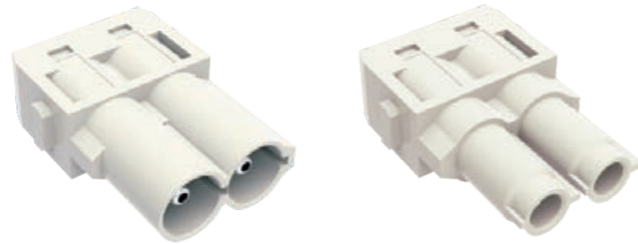
 尺寸图及孔位图
 Dimension and hole site

技术参数 Technical characteristics

规范 Specifications	DIN EN 60 664 DIN EN 61 984
插芯 Inserts	
依据EN 61 984的额定电压 Electrical data acc.to EN 61 984	
接插件针数 Number of contacts	2
• 额定电流 Rated current	100A
• 额定电压 Rated voltage	1000V
• 额定脉冲电压 Rated impulse voltage	8KV
• 污染程度 Pollution degree	3
依据UL额定电压 Rated voltage acc.to UL	600V
绝缘电阻 Insulation resistance	≥ 10 ¹⁰ Ω
材料 Material	聚碳酸酯 Polycarbonate
工作温度范围 Limiting temperatures	-40 °C ~+125 °C
依据UL94阻燃等级 Flammability acc.to UL94	V0
可拔插次数 Mechanical working life-mating cycles	≥ 500
插针 Contacts	
材料 Material	铜合金 Copper alloy
表面处理 Surface	镀银 Hard-silver plated
接触电阻 Contact resistance	≤ 0.3m Ω
电缆绞线依据IEC 60 228-5 To IEC 60 228 Class 5	
轴向螺栓连接 Axial screw terminal	
• mm ²	10-35mm ²
• AWG	6-2
• 内六角扳手 Hexagonal Driver	SW4
• 剥线长度 Stripping length	13mm
• 拧紧力矩 Tightening torque	
• mm ²	10 16 25 35
• Nm	6 6 7 8

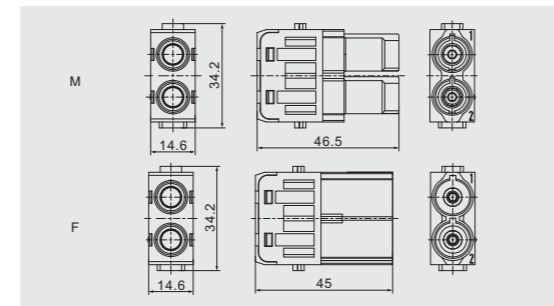


— 24B外壳带3个模块, 导线截面:25mm²
 — 24B外壳带3个模块, 导线截面:35mm²
 — 24 B hoods/housings with 3 modules, wire gauge:25mm²
 — 24 B hoods/housings with 3 modules, wire gauge:35mm²

DMK7-002 轴向压接型模块 Axial Module 1000V 70A

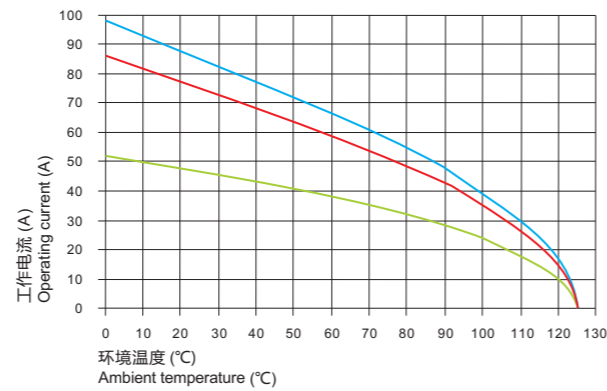

 DMK7-002-M(6-16mm²)
 DMK7-002-M(14-22mm²)

 DMK7-002-F(6-16mm²)
 DMK7-002-F(14-22mm²)

 尺寸图及孔位图
 Dimension and hole site


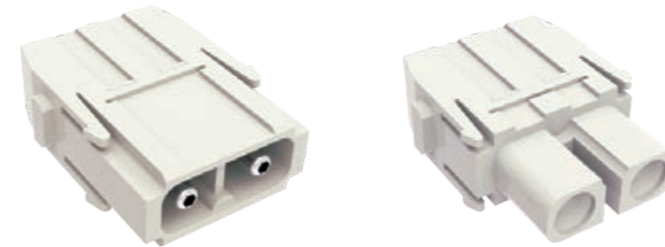
技术参数 Technical characteristics

规范 Specifications	DIN EN 60 664 DIN EN 61 984
插芯 Inserts	
依据EN 61 984的额定电压 Electrical data acc.to EN 61 984	
接插件针数 Number of contacts	2
• 额定电流 Rated current	70A
• 额定电压 Rated voltage	1000V
• 额定脉冲电压 Rated impulse voltage	8KV
• 污染程度 Pollution degree	3
依据UL额定电压 Rated voltage acc.to UL	600V
绝缘电阻 Insulation resistance	≥ 10 ¹⁰ Ω
材料 Material	聚碳酸酯 Polycarbonate
工作温度范围 Limiting temperatures	-40 °C ~+125 °C
依据UL94阻燃等级 Flammability acc.to UL94	V0
可拔插次数 Mechanical working life-mating cycles	≥ 500
插针 Contacts	
材料 Material	铜合金 Copper alloy
表面处理 Surface	镀银 Hard-silver plated
接触电阻 Contact resistance	≤ 0.5m Ω
电缆绞线依据IEC 60 228-5 To IEC 60 228 Class 5	
轴向螺栓连接 Axial screw terminal	
• mm ²	6-22mm ²
• AWG	8-4
• 内六角扳手 Hexagonal Driver	SW2.5
• 剥线长度 Stripping length	
• mm ²	6 10 16 22
• mm ²	11 ⁺¹ 11 ⁺¹ 11 ⁺¹ 12.5 ⁺¹
• 拧紧力矩 Tightening torque	
• mm ²	6 10 16 22
• Nm	2 3 4 5

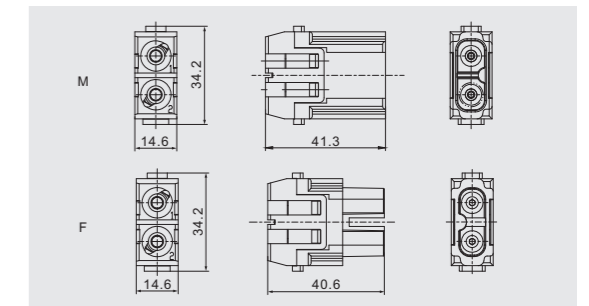


- 24B外壳带6个模块, 导线截面:22mm²
- 24B外壳带6个模块, 导线截面:16mm²
- 24B外壳带6个模块, 导线截面:6mm²
- 24 B hoods/housings with 6 modules, wire gauge:22mm²
- 24 B hoods/housings with 6 modules, wire gauge:16mm²
- 24 B hoods/housings with 6 modules, wire gauge:6mm²

DMK-002 轴向压接型模块 Axial Module 1000V 40A

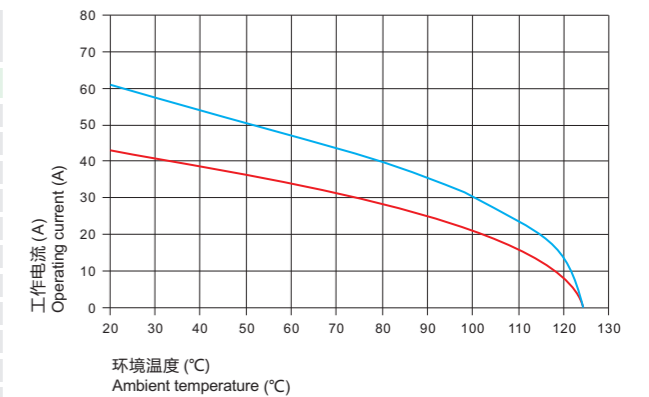

 DMK-002-M(2.5-8mm²)
 DMK-002-M(6-10mm²)

 DMK-002-F(2.5-8mm²)
 DMK-002-F(6-10mm²)

 尺寸图及孔位图
 Dimension and hole site


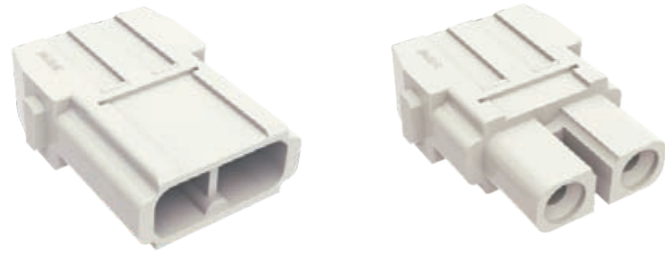
技术参数 Technical characteristics

规范 Specifications	DIN EN 60 664 DIN EN 61 984
插芯 Inserts	
依据EN 61 984的额定电压 Electrical data acc.to EN 61 984	
接插件针数 Number of contacts	2
• 额定电流 Rated current	40A
• 额定电压 Rated voltage	1000V
• 额定脉冲电压 Rated impulse voltage	8KV
• 污染程度 Pollution degree	3
依据UL额定电压 Rated voltage acc.to UL	600V
绝缘电阻 Insulation resistance	≥ 10 ¹⁰ Ω
材料 Material	聚碳酸酯 Polycarbonate
工作温度范围 Limiting temperatures	-40 °C ~+125 °C
依据UL94阻燃等级 Flammability acc.to UL94	V0
可拔插次数 Mechanical working life-mating cycles	≥ 500
插针 Contacts	
材料 Material	铜合金 Copper alloy
表面处理 Surface	镀银 Hard-silver plated
接触电阻 Contact resistance	≤ 0.5m Ω
电缆绞线依据IEC 60 228-5 To IEC 60 228 Class 5	
轴向螺栓连接 Axial screw terminal	
• mm ²	2.5-10mm ²
• AWG	14-8
• 内六角扳手 Hexagonal Driver	SW2
• 剥线长度 Stripping length	
• mm ²	2.5 4 6 10
• mm ²	5 ⁺¹ 5 ⁺¹ 8 ⁺¹ 11 ⁺¹
• 拧紧力矩 Tightening torque	
• mm ²	2.5 4 6 10
• Nm	1.5 1.5 2 2



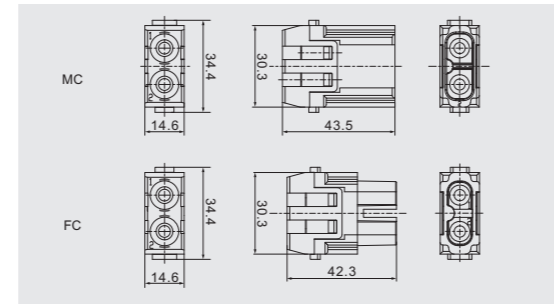
- 24B外壳带6个模块, 导线截面:10mm²
- 24B外壳带6个模块, 导线截面:6mm²
- 24 B hoods/housings with 6 modules, wire gauge:10mm²
- 24 B hoods/housings with 6 modules, wire gauge:6mm²

DMK-002 冷压型模块 Crimp Module 1000V 40A



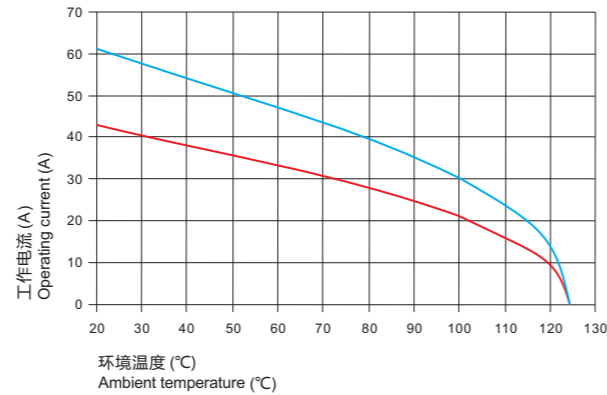
DMK-002-MC

DMK-002-FC

 尺寸图及孔位图
Dimension and hole site


技术参数 Technical characteristics

规范 Specifications	DIN EN 60 664 DIN EN 61 984
插芯 Inserts	
依据EN 61 984的额定电压 Electrical data acc.to EN 61 984	
接插件针数 Number of contacts	2
• 额定电流 Rated current	40A
• 额定电压 Rated voltage	1000V
• 额定脉冲电压 Rated impulse voltage	8KV
• 污染程度 Pollution degree	3
绝缘电阻 Insulation resistance	$\geq 10^{10} \Omega$
材料 Material	聚碳酸酯 Polycarbonate
工作温度范围 Limiting temperatures	-40 °C ~+125 °C
依据UL94阻燃等级 Flammability acc.to UL94	V0
可拔插次数 Mechanical working life-mating cycles	≥ 500
插针 Contacts	
材料 Material	铜合金 Copper alloy
表面处理 Surface	镀银 Hard-silver plated
接触电阻 Contact resistance	$\leq 0.3m \Omega$
冷压连接 Crimp terminal	
• mm ²	1.5-10mm ²
• AWG	16-8



附件 Accessories

选择冷压连接时, 需要另外配针, 如下附件:
When cold pressing connection is selected, additional stitches are needed, as shown in the attachment below:



Contacts,silver-plated		Contacts,gold plated		ϕ (A)	Wire gauge		Recommended stripping length
Male Contacts	Female Contacts	Male Contacts	Female Contacts		(mm ²)	(AWG)	
40A-SM-1.5	40A-SF-1.5	40A-GM-1.5	40A-GF-1.5	1.75	1.50	16	9.0mm
40A-SM-2.5	40A-SF-2.5	40A-GM-2.5	40A-GF-2.5	2.25	2.50	14	9.0mm
40A-SM-4.0	40A-SF-4.0	40A-GM-4.0	40A-GF-4.0	2.85	4.0	12	9.5mm
40A-SM-6.0	40A-SF-6.0	40A-GM-6.0	40A-GF-6.0	3.50	6.0	10	9.5mm

工具 Tools



冷压钳 Crimping tool

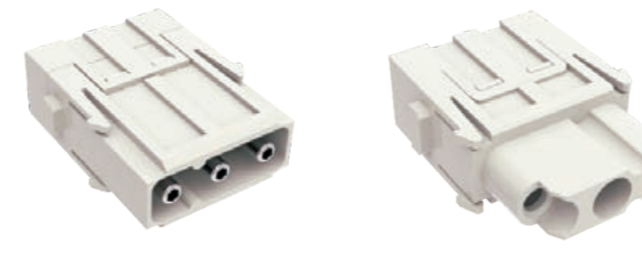
压接线径 Wire gauge : 0.5~4.0mm² (AWG 20-12)
型号 Type : TL1-4.0



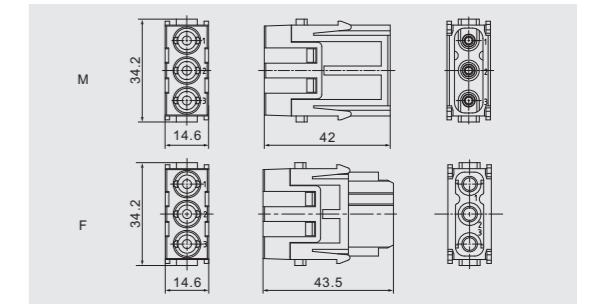
退针器 Removal tool

适用类型 For: 40A冷压针 40A Crimp contacts
型号 Type : RT-40A

DMK-003 轴向压接型模块 Axial Module 690V 40A

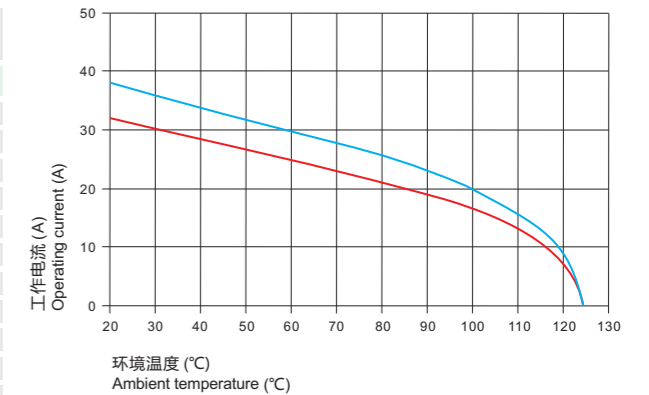

 DMK-003-M(2.5-8mm²)
DMK-003-M(6-10mm²)

 DMK-003-F(2.5-8mm²)
DMK-003-F(6-10mm²)

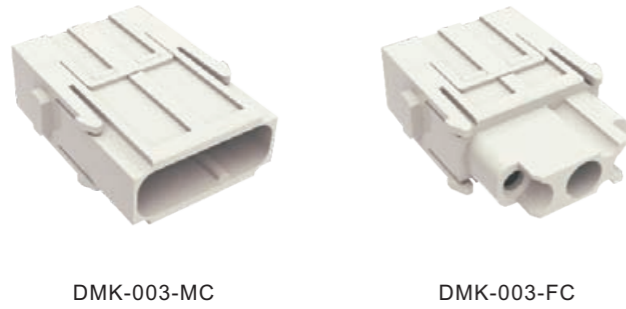
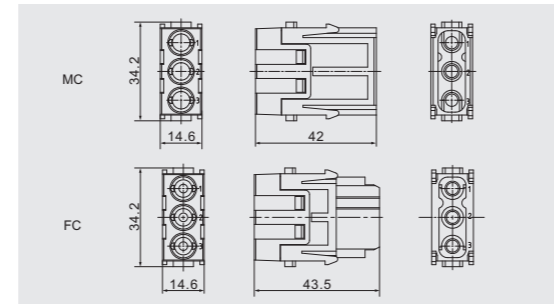
 尺寸图及孔位图
Dimension and hole site


技术参数 Technical characteristics

规范 Specifications	DIN EN 60 664 DIN EN 61 984
插芯 Inserts	
依据EN 61 984的额定电压 Electrical data acc.to EN 61 984	
接插件针数 Number of contacts	3
• 额定电流 Rated current	40A
• 额定电压 Rated voltage	690V
• 额定脉冲电压 Rated impulse voltage	8KV
• 污染程度 Pollution degree	3
依据UL94阻燃等级 Flammability acc.to UL94	V0
绝缘电阻 Insulation resistance	$\geq 10^{10} \Omega$
材料 Material	聚碳酸酯 Polycarbonate
工作温度范围 Limiting temperatures	-40 °C ~+125 °C
可拔插次数 Mechanical working life-mating cycles	≥ 500
插针 Contacts	
材料 Material	铜合金 Copper alloy
表面处理 Surface	镀银 Hard-silver plated
接触电阻 Contact resistance	$\leq 0.3m \Omega$
电缆绞线依据IEC 60 228-5 To IEC 60 228 Class 5	
轴向螺栓连接 Axial screw terminal	
• mm ²	2.5-10mm ²
• AWG	14-8
• 内六角扳手 Hexagonal Driver	SW2
• 剥线长度 Stripping length	
• mm ²	2.5 4 6 10
• mm ²	5 ⁺¹ 5 ⁺¹ 8 ⁺¹ 11 ⁺¹
• 拧紧力矩 Tightening torque	
• mm ²	2.5 4 6 10
• Nm	1.5 1.5 2 2

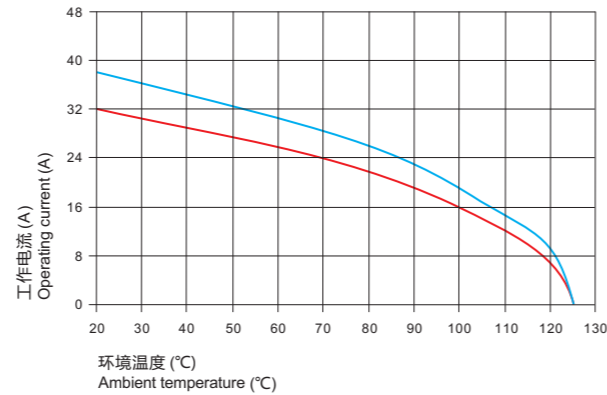


DMK-003 冷压型模块 Crimp Module 500V 40A


 尺寸图及孔位图
Dimension and hole site


技术参数 Technical characteristics

规范 Specifications	DIN EN 60 664 DIN EN 61 984
插芯 Inserts	
依据EN 61 984的额定电压 Electrical data acc.to EN 61 984	
接插件针数 Number of contacts	3
• 额定电流 Rated current	40A
• 额定电压 Rated voltage	500V
• 额定脉冲电压 Rated impulse voltage	6KV
• 污染程度 Pollution degree	3
依据UL/CSA额定电压 Rated voltage acc. to UL CSA	600V
依据UL/CSA额定电流 Rated current acc. to UL CSA	32A
绝缘电阻 Insulation resistance	$\geq 10^{10} \Omega$
材料 Material	聚碳酸酯 Polycarbonate
工作温度范围 Limiting temperatures	-40 °C ~+125 °C
依据UL94阻燃等级 Flammability acc.to UL94	V0
可拔插次数 Mechanical working life-mating cycles	≥ 500
插针 Contacts	
材料 Material	铜合金 Copper alloy
表面处理 Surface	镀银 Hard-silver plated
接触电阻 Contact resistance	$\leq 0.3m \Omega$
冷压连接 Crimp terminal	
• mm ²	1.5-10mm ²
• AWG	16-8



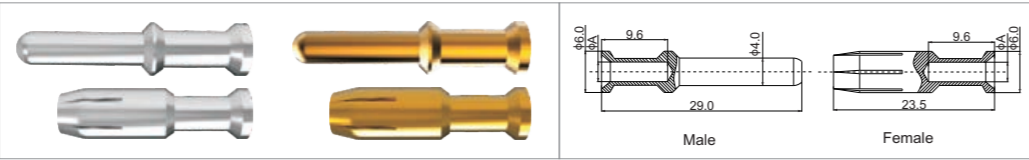
附件 Accessories

选择冷压连接时, 需要另外配针, 如下附件:

When cold pressing connection is selected, additional stitches are needed, as shown in the attachment below:

(40A) Crimp contacts

Material: Copper alloy
 Contact resistance $\leq 0.3m\Omega$
 Matching: DM,DK inserts
 Surface: Gold/silver plated
 Terminal: Crimp connection



Contacts, silver-plated		Contacts, gold plated		ϕ (A)	Wire gauge		Recommended stripping length
Male Contacts	Female Contacts	Male Contacts	Female Contacts		(mm ²)	(AWG)	
40A-SM-1.5	40A-SF-1.5	40A-GM-1.5	40A-GF-1.5	1.75	1.50	16	9.0mm
40A-SM-2.5	40A-SF-2.5	40A-GM-2.5	40A-GF-2.5	2.25	2.50	14	9.0mm
40A-SM-4.0	40A-SF-4.0	40A-GM-4.0	40A-GF-4.0	2.85	4.0	12	9.5mm
40A-SM-6.0	40A-SF-6.0	40A-GM-6.0	40A-GF-6.0	3.50	6.0	10	9.5mm

工具 Tools



冷压钳 Crimping tool

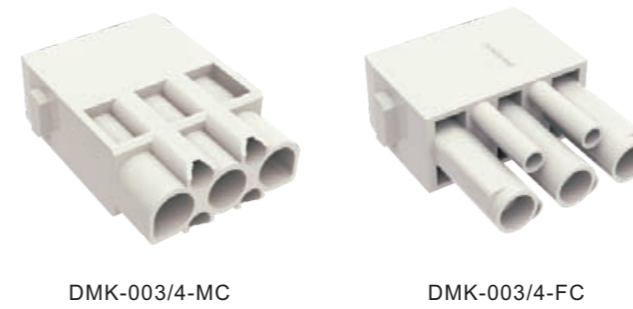
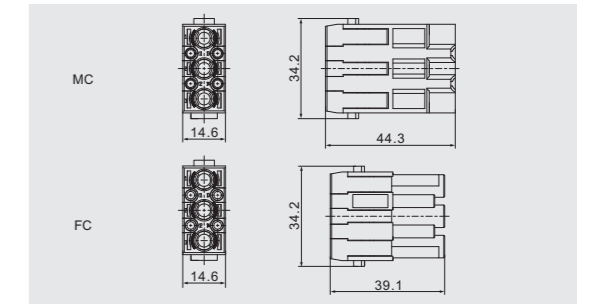
压接线径 Wire gauge : 0.5~4.0mm² (AWG 20-12)
 型号 Type : TL1-4.0



退针器 Removal tool

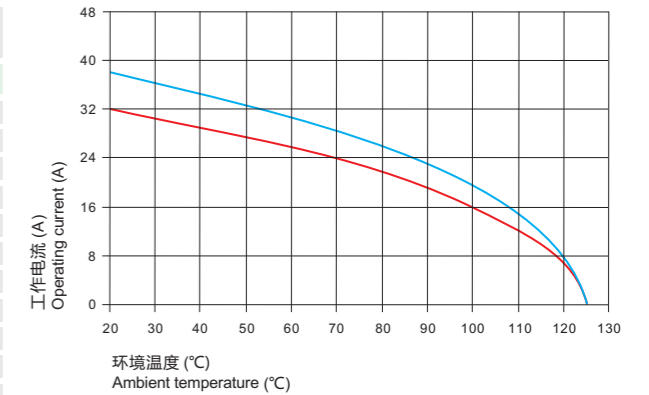
适用类型 For: 40A冷压针 40A Crimp contacts
 型号 Type : RT-40A

DMK-003/4 冷压型模块 Crimp Module 830/830V 40/10A


 尺寸图及孔位图
Dimension and hole site


技术参数 Technical characteristics

规范 Specifications	DIN EN 60 664 DIN EN 61 984
插芯 Inserts	
依据EN 61 984的额定电压 Electrical data acc.to EN 61 984	
接插件针数 Number of contacts	3/4
电力区/信号区 Power Area/Signal Area	
• 额定电流 Rated current	40A/10A
• 额定电压 Rated voltage	830V
• 额定脉冲电压 Rated impulse voltage	8KV
• 污染程度 Pollution degree	3
依据UL额定电压 Rated voltage acc.to UL	600V
绝缘电阻 Insulation resistance	$\geq 10^{10} \Omega$
材料 Material	聚碳酸酯 Polycarbonate
工作温度范围 Limiting temperatures	-40 °C ~+125 °C
依据UL94阻燃等级 Flammability acc.to UL94	V0
可拔插次数 Mechanical working life-mating cycles	≥ 500
插针 Contacts	
材料 Material	铜合金 Copper alloy
表面处理 Surface	镀银 Hard-silver plated 镀金 Hard-gold plated
接触电阻 Contact resistance	
• 电力区 Power Contacts	$\leq 0.3m \Omega$
• 信号区 Signal Contacts	$\leq 3m \Omega$
冷压连接 Crimp terminal	
• mm ² /AWG	
• 电力区 Power Contacts	1.5-6mm ² /16-10
• 信号区 Signal Contacts	0.14-2.5mm ² /26-14
最大电缆直径 Max.insulation diameter	
• 电力区 Power Contacts	5mm



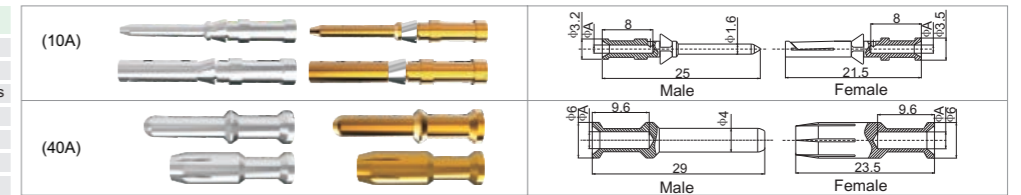
附件 Accessories

选择冷压连接时, 需要另外配针, 如下附件:

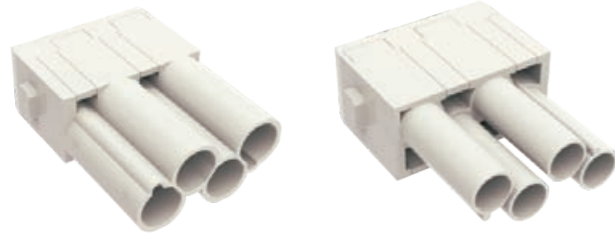
When cold pressing connection is selected, additional stitches are needed, as shown in the attachment below:

(10A/40A) Crimp contacts

Material: Copper alloy
 Contact resistance $\leq 3m\Omega$
 Matching: DD,DDD,DM,DK,DQ inserts
 Surface: Gold/silver plated
 Terminal: Crimp connection

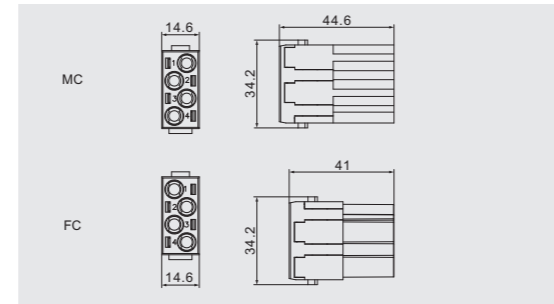


Contacts, silver-plated		Contacts, gold plated		ϕ (A)		Wire gauge		Recommended stripping length		
Male Contacts	Female Contacts	Male Contacts	Female Contacts	10A	40A	10A(mm ²)	10A(AWG)	40A(AWG)	10A	40A
10A-SM-0.37	10A-SF-0.37	10A-GM-0.37	10A-GF-0.37	0.9	--	0.14-0.37	--	26-22	--	8mm
10A-SM-0.5	10A-SF-0.5	10A-GM-0.5	10A-GF-0.5	1.1	--	0.50	--	20	--	8mm
10A-SM-0.75	10A-SF-0.75	10A-GM-0.75	10A-GF-0.75	1.3	--	0.75	--	18	--	8mm
10A-SM-1.0	10A-SF-1.0	10A-GM-1.0	10A-GF-1.0	1.45	--	1.00	--	18	--	8mm
10A/40A-SM-1.5	10A/40A-SF-1.5	10A/40A-GM-1.5	10A/40A-GF-1.5	1.75	1.75	1.50	1.50	16	16	8mm 9.0mm
10A/40A-SM-2.5	10A/40A-SF-2.5	10A/40A-GM-2.5	10A/40A-GF-2.5	2.25	2.25	2.50	2.50	14	14	6mm 9.0mm
40A-SM-4.0	40A-SF-4.0	40A-GM-4.0	40A-GF-4.0	--	2.85	--	4.0	--	12	-- 9.5mm
40A-SM-6.0	40A-SF-6.0	40A-GM-6.0	40A-GF-6.0	--	3.50	--	6.0	--	10	-- 9.5mm

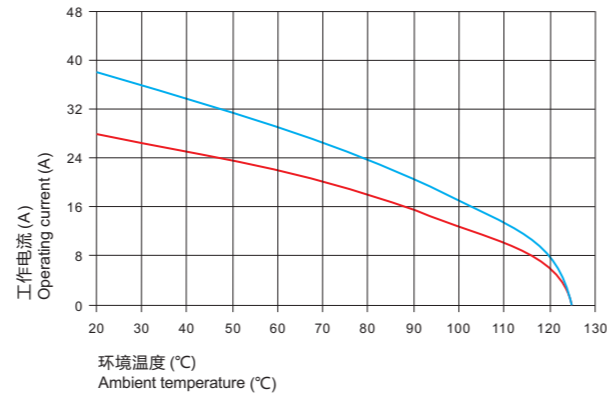
DMK-004 冷压型模块 Crimp Module 830V 40A


DMK-004-MC

DMK-004-FC

 尺寸图及孔位图
Dimension and hole site

技术参数 Technical characteristics

规范 Specifications	DIN EN 60 664 DIN EN 61 984
插芯 Inserts	
依据EN 61 984的额定电压 Electrical data acc.to EN 61 984	
接插件针数 Number of contacts	4
• 额定电流 Rated current	40A
• 额定电压 Rated voltage	830V
• 额定脉冲电压 Rated impulse voltage	8KV
• 污染程度 Pollution degree	3
依据UL额定电压 Rated voltage acc. to UL	600V
绝缘电阻 Insulation resistance	$\geq 10^{10} \Omega$
材料 Material	聚碳酸酯 Polycarbonate
工作温度范围 Limiting temperatures	-40 °C ~+125 °C
依据UL94阻燃等级 Flammability acc.to UL94	V0
可拔插次数 Mechanical working life-mating cycles	≥ 500
插针 Contacts	
材料 Material	铜合金 Copper alloy
表面处理 Surface	镀银 Hard-silver plated
接触电阻 Contact resistance	$\leq 0.3m \Omega$
冷压连接 Crimp terminal	
• mm ²	1.5-6mm ²
• AWG	16-10

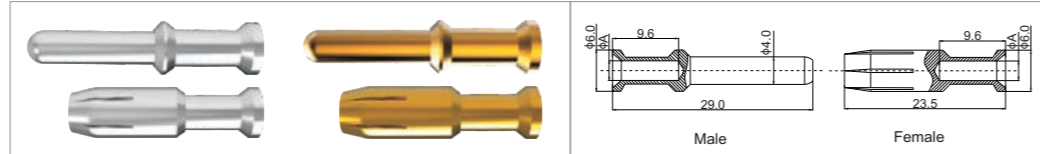

附件 Accessories

选择冷压连接时, 需要另外配针, 如下附件:

When cold pressing connection is selected, additional stitches are needed, as shown in the attachment below:

(40A) Crimp contacts

Material: Copper alloy
Contact resistance $\leq 0.3m \Omega$
Matching: DM,DK inserts
Surface: Gold/silver plated
Terminal: Crimp connection



Contacts, silver-plated		Contacts, gold plated		(ϕ) (A)	Wire gauge		Recommended stripping length
Male Contacts	Female Contacts	Male Contacts	Female Contacts		(mm ²)	(AWG)	
40A-SM-1.5	40A-SF-1.5	40A-GM-1.5	40A-GF-1.5	1.75	1.50	16	9.0mm
40A-SM-2.5	40A-SF-2.5	40A-GM-2.5	40A-GF-2.5	2.25	2.50	14	9.0mm
40A-SM-4.0	40A-SF-4.0	40A-GM-4.0	40A-GF-4.0	2.85	4.0	12	9.5mm
40A-SM-6.0	40A-SF-6.0	40A-GM-6.0	40A-GF-6.0	3.50	6.0	10	9.5mm

工具 Tools

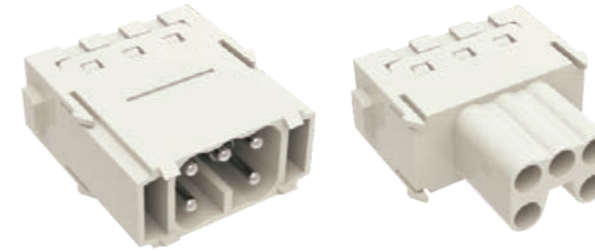

冷压钳 Crimping tool

压接线径 Wire gauge : 0.5~4.0mm² (AWG 20-12)
型号 Type : TL1-4.0



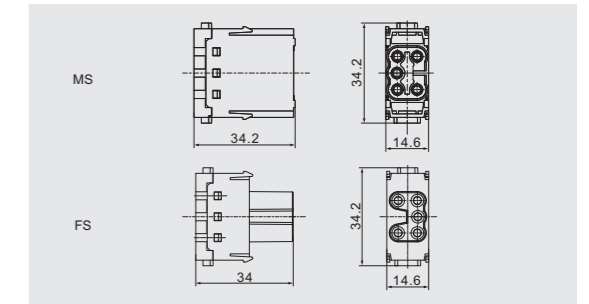
退针器 Removal tool

适用类型 For: 40A冷压针 40A Crimp contacts
型号 Type : RT-40A

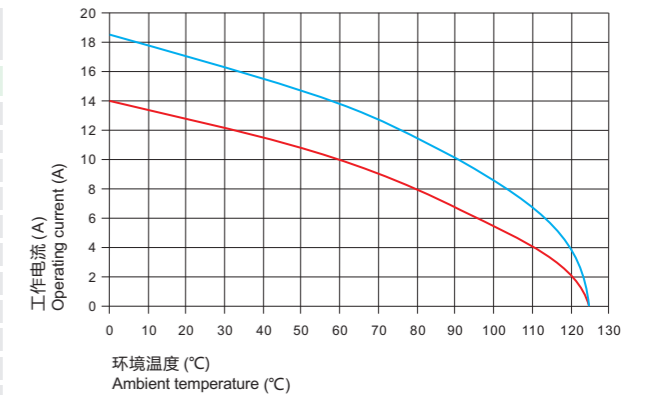
DME-005 弹片型模块 Cage-clamp Module 400V 16A


DME-005-MS

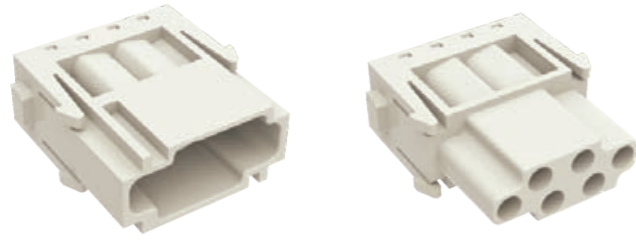
DME-005-FS

 尺寸图及孔位图
Dimension and hole site

技术参数 Technical characteristics

规范 Specifications	DIN EN 60 664 DIN EN 61 984
插芯 Inserts	
依据EN 61 984的额定电压 Electrical data acc.to EN 61 984	
接插件针数 Number of contacts	5
• 额定电流 Rated current	16A
• 额定电压 Rated voltage	400V
• 额定脉冲电压 Rated impulse voltage	6KV
• 污染程度 Pollution degree	3
依据UL/CSA额定电压 Rated voltage acc. to UL CSA	600V
绝缘电阻 Insulation resistance	$\geq 10^{10} \Omega$
材料 Material	聚碳酸酯 Polycarbonate
工作温度范围 Limiting temperatures	-40 °C ~+125 °C
依据UL94阻燃等级 Flammability acc.to UL94	V0
可拔插次数 Mechanical working life-mating cycles	≥ 500
插针 Contacts	
材料 Material	铜合金 Copper alloy
表面处理 Surface	镀银 Hard-silver plated
接触电阻 Contact resistance	$\leq 0.3m \Omega$
冷压连接 Crimp terminal	
• mm ²	0.14~2.5mm ²
• AWG	26-14

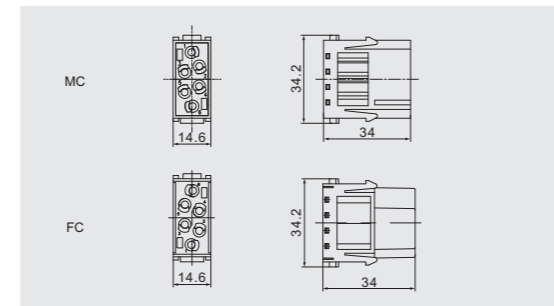


DME-006 冷压型模块 Crimp Module 500V 16A



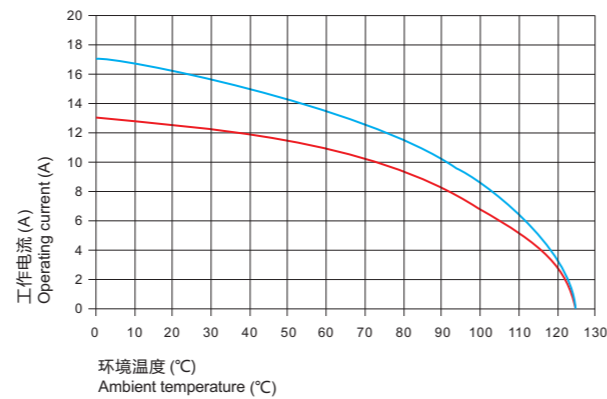
DME-006-MC

DME-006-FC

 尺寸图及孔位图
Dimension and hole site


技术参数 Technical characteristics

规范 Specifications	DIN EN 60 664 DIN EN 61 984
插芯 Inserts	
依据EN 61 984的额定电压 Electrical data acc.to EN 61 984	
接插件针数 Number of contacts	6
• 额定电流 Rated current	16A
• 额定电压 Rated voltage	500V
• 额定脉冲电压 Rated impulse voltage	6KV
• 污染程度 Pollution degree	3
依据UL/CSA额定电压 Rated voltage acc. to UL CSA	600V
绝缘电阻 Insulation resistance	$\geq 10^{10} \Omega$
材料 Material	聚碳酸酯 Polycarbonate
工作温度范围 Limiting temperatures	-40 °C ~+125 °C
依据UL94阻燃等级 Flammability acc.to UL94	V0
可拔插次数 Mechanical working life-mating cycles	≥ 500
插针 Contacts	
材料 Material	铜合金 Copper alloy
表面处理 Surface	镀银 Hard-silver plated
接触电阻 Contact resistance	$\leq 1m \Omega$
冷压连接 Crimp terminal	
• mm ² /AWG	0.14-4mm ² /26-12



附件 Accessories

选择冷压连接时, 需要另外配针, 如下附件:
When cold pressing connection is selected, additional stitches are needed, as shown in the attachment below:

(16A) Crimp contacts
Material: Copper alloy
Contact resistance $\leq 1m\Omega$
Matching: DA, DE, DEE, DM, DK inserts
Surface: Gold/silver plated
Terminal: Crimp connection



Contacts, silver-plated		Contacts, gold plated		ϕ (A)	Wire gauge		Recommended stripping length
Male Contacts	Female Contacts	Male Contacts	Female Contacts		(mm ²)	(AWG)	
16A-SM-0.37	16A-SF-0.37	16A-GM-0.37	16A-GF-0.37	0.9	0.14-0.37	26-22	7.5mm
16A-SM-0.5	16A-SF-0.5	16A-GM-0.5	16A-GF-0.5	1.1	0.50	20	7.5mm
16A-SM-0.75	16A-SF-0.75	16A-GM-0.75	16A-GF-0.75	1.3	0.75	18	7.5mm
16A-SM-1.0	16A-SF-1.0	16A-GM-1.0	16A-GF-1.0	1.45	1.00	18	7.5mm
16A-SM-1.5	16A-SF-1.5	16A-GM-1.5	16A-GF-1.5	1.75	1.50	16	7.5mm
16A-SM-2.5	16A-SF-2.5	16A-GM-2.5	16A-GF-2.5	2.25	2.50	14	7.5mm
16A-SM-4.0	16A-SF-4.0	16A-GM-4.0	16A-GF-4.0	2.85	4.00	12	7.5mm

工具 Tools



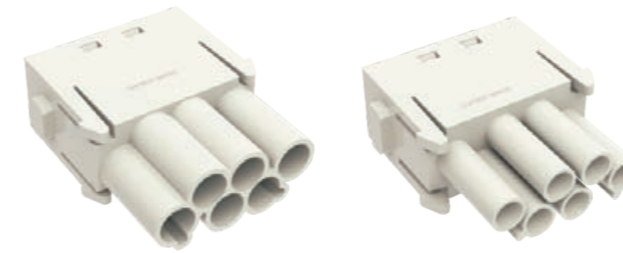
冷压钳 Crimping tool

压接线径 Wire gauge : 0.5~4.0mm² (AWG 20-12)
型号 Type : TL1-4.0

退针器 Removal tool

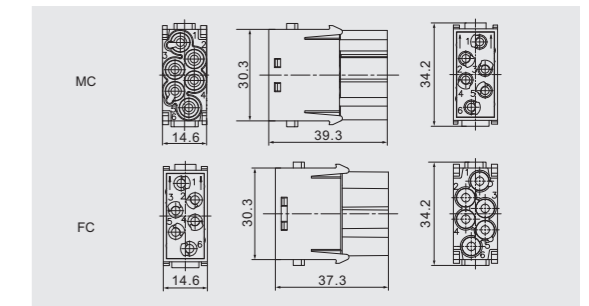
适用类型 For: 16A 冷压针 16A Crimp contacts
型号 Type : RT-16A

DVME-006 冷压型模块 Crimp Module 500V 16A



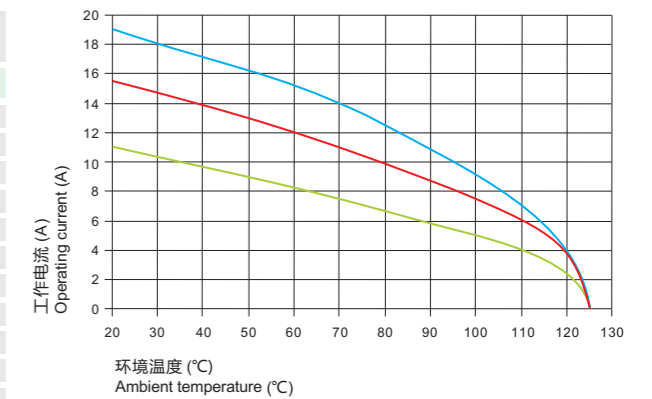
DVME-006-MC

DVME-006-FC

 尺寸图及孔位图
Dimension and hole site


技术参数 Technical characteristics

规范 Specifications	DIN EN 60 664 DIN EN 61 984
插芯 Inserts	
依据EN 61 984的额定电压 Electrical data acc.to EN 61 984	
接插件针数 Number of contacts	6
• 额定电流 Rated current	16A
• 额定电压 Rated voltage	830V
• 额定脉冲电压 Rated impulse voltage	8KV
• 污染程度 Pollution degree	3
依据UL额定电压 Rated voltage acc. to UL	600V
绝缘电阻 Insulation resistance	$\geq 10^{10} \Omega$
材料 Material	聚碳酸酯 Polycarbonate
工作温度范围 Limiting temperatures	-40 °C ~+125 °C
依据UL94阻燃等级 Flammability acc.to UL94	V0
可拔插次数 Mechanical working life-mating cycles	≥ 500
插针 Contacts	
材料 Material	铜合金 Copper alloy
表面处理 Surface	镀银 / 镀金 Hard-silver/gold plated
接触电阻 Contact resistance	$\leq 1m \Omega$
冷压连接 Crimp terminal	
• mm ² /AWG	0.14-4mm ² /26-12



附件 Accessories

选择冷压连接时, 需要另外配针, 如下附件:
When cold pressing connection is selected, additional stitches are needed, as shown in the attachment below:

(16A) Crimp contacts
Material: Copper alloy
Contact resistance $\leq 1m\Omega$
Matching: DA, DE, DEE, DM, DK inserts
Surface: Gold/silver plated
Terminal: Crimp connection



Contacts, silver-plated		Contacts, gold plated		ϕ (A)	Wire gauge		Recommended stripping length
Male Contacts	Female Contacts	Male Contacts	Female Contacts		(mm ²)	(AWG)	
16A-SM-0.37	16A-SF-0.37	16A-GM-0.37	16A-GF-0.37	0.9	0.14-0.37	26-22	7.5mm
16A-SM-0.5	16A-SF-0.5	16A-GM-0.5	16A-GF-0.5	1.1	0.50	20	7.5mm
16A-SM-0.75	16A-SF-0.75	16A-GM-0.75	16A-GF-0.75	1.3	0.75	18	7.5mm
16A-SM-1.0	16A-SF-1.0	16A-GM-1.0	16A-GF-1.0	1.45	1.00	18	7.5mm
16A-SM-1.5	16A-SF-1.5	16A-GM-1.5	16A-GF-1.5	1.75	1.50	16	7.5mm
16A-SM-2.5	16A-SF-2.5	16A-GM-2.5	16A-GF-2.5	2.25	2.50	14	7.5mm
16A-SM-4.0	16A-SF-4.0	16A-GM-4.0	16A-GF-4.0	2.85	4.00	12	7.5mm

工具 Tools

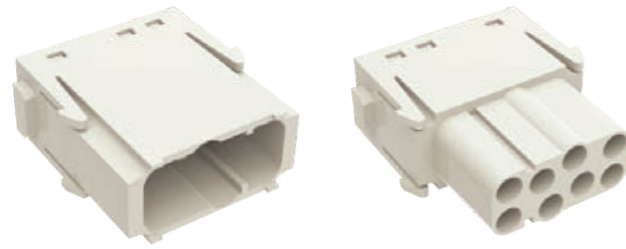


冷压钳 Crimping tool

压接线径 Wire gauge : 0.5~4.0mm² (AWG 20-12)
型号 Type : TL1-4.0

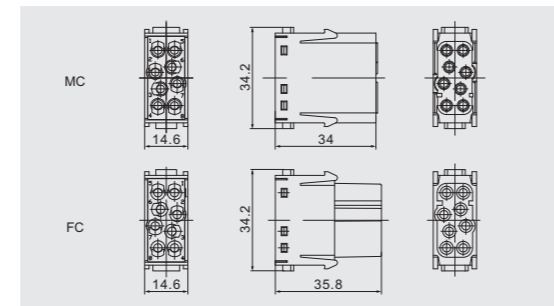
退针器 Removal tool

适用类型 For: 16A 冷压针 16A Crimp contacts
型号 Type : RT-16A

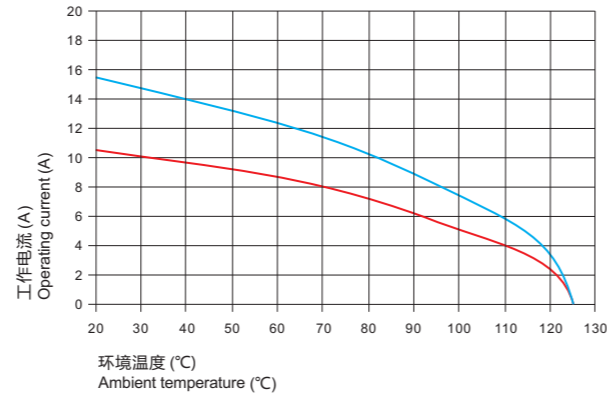
DMEE-008 冷压型模块 Crimp Module 400V 16A


DMEE-008-MC

DMEE-008-FC

 尺寸图及孔位图
Dimension and hole site

技术参数 Technical characteristics

规范 Specifications	DIN EN 60 664 DIN EN 61 984
插芯 Inserts	
依据EN 61 984的额定电压 Electrical data acc.to EN 61 984	
接插件针数 Number of contacts	8
• 额定电流 Rated current	16A
• 额定电压 Rated voltage	400V
• 额定脉冲电压 Rated impulse voltage	6KV
• 污染程度 Pollution degree	3
依据UL/CSA额定电压 Rated voltage acc. to UL CSA	600V
绝缘电阻 Insulation resistance	$\geq 10^{10} \Omega$
材料 Material	聚碳酸酯 Polycarbonate
工作温度范围 Limiting temperatures	-40 °C ~+125 °C
依据UL94阻燃等级 Flammability acc.to UL94	V0
可拔插次数 Mechanical working life-mating cycles	≥ 500
插针 Contacts	
材料 Material	铜合金 Copper alloy
表面处理 Surface	镀银 / 镀金 Hard-silver/gold plated
接触电阻 Contact resistance	$\leq 1m \Omega$
冷压连接 Crimp terminal	
• mm ² /AWG	0.14-4mm ² /26-12


附件 Accessories

选择冷压连接时, 需要另外配针, 如下附件:
When cold pressing connection is selected, additional stitches are needed, as shown in the attachment below:

(16A) Crimp contacts							
Material: Copper alloy		Contact resistance $\leq 1m\Omega$		Matching:DA,DE,DEE,DM,DK inserts			
Surface: Gold/silver plated		Terminal: Crimp connection					
Contacts,silver-plated		Contacts,gold plated		ϕ (A)	Wire gauge		Recommended stripping length
Male Contacts	Female Contacts	Male Contacts	Female Contacts		(mm ²)	(AWG)	
16A-SM-0.37	16A-SF-0.37	16A-GM-0.37	16A-GF-0.37	0.9	0.14-0.37	26-22	7.5mm
16A-SM-0.5	16A-SF-0.5	16A-GM-0.5	16A-GF-0.5	1.1	0.50	20	7.5mm
16A-SM-0.75	16A-SF-0.75	16A-GM-0.75	16A-GF-0.75	1.3	0.75	18	7.5mm
16A-SM-1.0	16A-SF-1.0	16A-GM-1.0	16A-GF-1.0	1.45	1.00	18	7.5mm
16A-SM-1.5	16A-SF-1.5	16A-GM-1.5	16A-GF-1.5	1.75	1.50	16	7.5mm
16A-SM-2.5	16A-SF-2.5	16A-GM-2.5	16A-GF-2.5	2.25	2.50	14	7.5mm
16A-SM-4.0	16A-SF-4.0	16A-GM-4.0	16A-GF-4.0	2.85	4.00	12	7.5mm

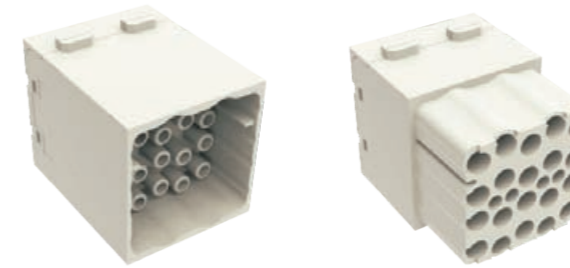
工具 Tools

冷压钳 Crimping tool

压接线径 Wire gauge : 0.5~4.0mm² (AWG 20-12)
型号 Type : TL1-4.0

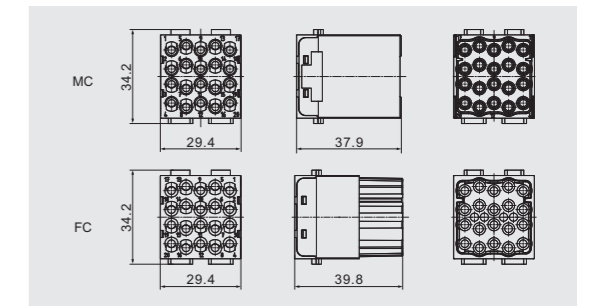
退针器 Removal tool

适用类型 For: 16A 冷压针 16A Crimp contacts
型号 Type : RT-16A

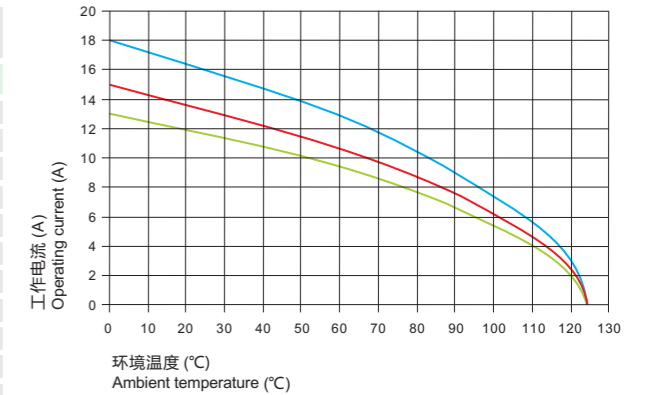
DMEE-020 冷压型模块 Crimp Module 500V 16A


DMEE-020-MC

DMEE-020-FC

 尺寸图及孔位图
Dimension and hole site

技术参数 Technical characteristics

规范 Specifications	DIN EN 60 664 DIN EN 61 984
插芯 Inserts	
依据EN 61 984的额定电压 Electrical data acc.to EN 61 984	
接插件针数 Number of contacts	20
• 额定电流 Rated current	16A
• 额定电压 Rated voltage	500V
• 额定脉冲电压 Rated impulse voltage	6KV
• 污染程度 Pollution degree	3
依据UL/CSA额定电压 Rated voltage acc. to UL	600V
绝缘电阻 Insulation resistance	$\geq 10^{10} \Omega$
材料 Material	聚碳酸酯 Polycarbonate
工作温度范围 Limiting temperatures	-40 °C ~+125 °C
依据UL94阻燃等级 Flammability acc.to UL94	V0
可拔插次数 Mechanical working life-mating cycles	≥ 500
插针 Contacts	
材料 Material	铜合金 Copper alloy
表面处理 Surface	镀银 / 镀金 Hard-silver/gold plated
接触电阻 Contact resistance	$\leq 1m \Omega$
冷压连接 Crimp terminal	
• mm ² /AWG	0.14-4mm ² /26-12


附件 Accessories

选择冷压连接时, 需要另外配针, 如下附件:
When cold pressing connection is selected, additional stitches are needed, as shown in the attachment below:

(16A) Crimp contacts							
Material: Copper alloy		Contact resistance $\leq 1m\Omega$		Matching:DA,DE,DEE,DM,DK inserts			
Surface: Gold/silver plated		Terminal: Crimp connection					
Contacts,silver-plated		Contacts,gold plated		ϕ (A)	Wire gauge		Recommended stripping length
Male Contacts	Female Contacts	Male Contacts	Female Contacts		(mm ²)	(AWG)	
16A-SM-0.37	16A-SF-0.37	16A-GM-0.37	16A-GF-0.37	0.9	0.14-0.37	26-22	7.5mm
16A-SM-0.5	16A-SF-0.5	16A-GM-0.5	16A-GF-0.5	1.1	0.50	20	7.5mm
16A-SM-0.75	16A-SF-0.75	16A-GM-0.75	16A-GF-0.75	1.3	0.75	18	7.5mm
16A-SM-1.0	16A-SF-1.0	16A-GM-1.0	16A-GF-1.0	1.45	1.00	18	7.5mm
16A-SM-1.5	16A-SF-1.5	16A-GM-1.5	16A-GF-1.5	1.75	1.50	16	7.5mm
16A-SM-2.5	16A-SF-2.5	16A-GM-2.5	16A-GF-2.5	2.25	2.50	14	7.5mm
16A-SM-4.0	16A-SF-4.0	16A-GM-4.0	16A-GF-4.0	2.85	4.00	12	7.5mm

工具 Tools

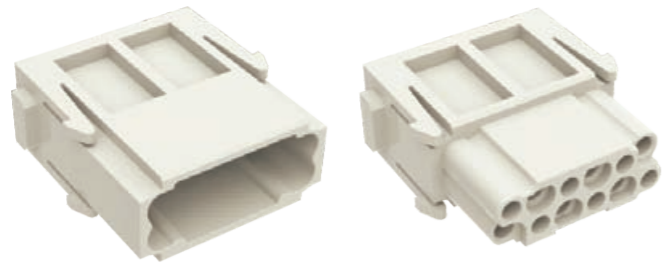
冷压钳 Crimping tool

压接线径 Wire gauge : 0.5~4.0mm² (AWG 20-12)
型号 Type : TL1-4.0

退针器 Removal tool

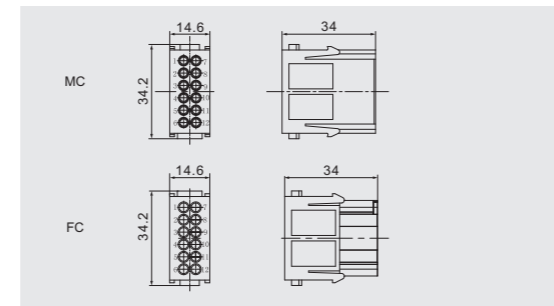
适用类型 For: 16A 冷压针 16A Crimp contacts
型号 Type : RT-16A

DMD-012 冷压型模块 Crimp Module 250V 10A



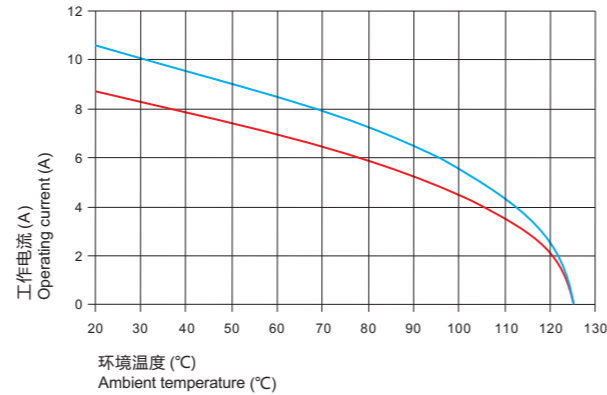
DMD-012-MC

DMD-012-FC

 尺寸图及孔位图
Dimension and hole site


技术参数 Technical characteristics

规范 Specifications	DIN EN 60 664 DIN EN 61 984
插芯 Inserts	
依据EN 61 984的额定电压 Electrical data acc.to EN 61 984	
接插件针数 Number of contacts	12
• 额定电流 Rated current	10A
• 额定电压 Rated voltage	250V
• 额定脉冲电压 Rated impulse voltage	4KV
• 污染程度 Pollution degree	3
依据UL/CSA额定电压 Rated voltage acc. to UL CSA	600V
绝缘电阻 Insulation resistance	$\geq 10^{10} \Omega$
材料 Material	聚碳酸酯 Polycarbonate
工作温度范围 Limiting temperatures	-40 °C ~+125 °C
依据UL94阻燃等级 Flammability acc.to UL94	V0
可拔插次数 Mechanical working life-mating cycles	≥ 500
插针 Contacts	
材料 Material	铜合金 Copper alloy
表面处理 Surface	镀银 / 镀金 Hard-silver/gold plated
接触电阻 Contact resistance	$\leq 3m \Omega$
冷压连接 Crimp terminal	
• mm ² /AWG	0.14-2.5mm ² /26-14



附件 Accessories

选择冷压连接时, 需要另外配针, 如下附件:
When cold pressing connection is selected, additional stitches are needed, as shown in the attachment below:



Contacts, silver-plated		Contacts, gold plated		ϕ (A)	Wire gauge		Recommended stripping length
Male Contacts	Female Contacts	Male Contacts	Female Contacts		(mm ²)	(AWG)	
10A-SM-0.37	10A-SF-0.37	10A-GM-0.37	10A-GF-0.37	0.9	0.14-0.37	26-22	8mm
10A-SM-0.5	10A-SF-0.5	10A-GM-0.5	10A-GF-0.5	1.1	0.50	20	8mm
10A-SM-0.75	10A-SF-0.75	10A-GM-0.75	10A-GF-0.75	1.3	0.75	18	8mm
10A-SM-1.0	10A-SF-1.0	10A-GM-1.0	10A-GF-1.0	1.45	1.00	18	8mm
10A-SM-1.5	10A-SF-1.5	10A-GM-1.5	10A-GF-1.5	1.75	1.50	16	8mm
10A-SM-2.5	10A-SF-2.5	10A-GM-2.5	10A-GF-2.5	2.25	2.50	14	6mm

工具 Tools



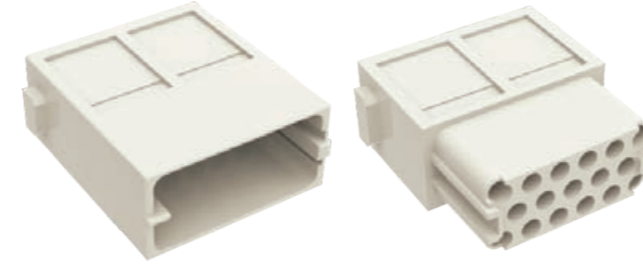
冷压钳 Crimping tool

压接线径 Wire gauge : 0.5~4.0mm² (AWG 20-12)
型号 Type : TL1-4.0

退针器 Removal tool

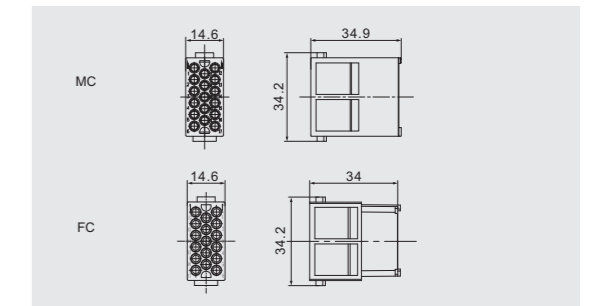
适用类型 For: 10A冷压针 10A Crimp contacts
型号 Type : RT-10A

DMD-017 冷压型模块 Crimp Module 160V 10A



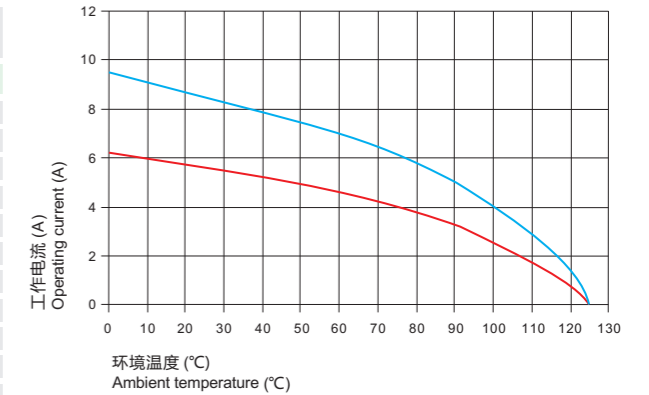
DMD-017-MC

DMD-017-FC

 尺寸图及孔位图
Dimension and hole site


技术参数 Technical characteristics

规范 Specifications	DIN EN 60 664 DIN EN 61 984
插芯 Inserts	
依据EN 61 984的额定电压 Electrical data acc.to EN 61 984	
接插件针数 Number of contacts	17
• 额定电流 Rated current	10A
• 额定电压 Rated voltage	160V
• 额定脉冲电压 Rated impulse voltage	2.5KV
• 污染程度 Pollution degree	3
依据UL额定电压 Rated voltage acc. to UL	600V
绝缘电阻 Insulation resistance	$\geq 10^{10} \Omega$
材料 Material	聚碳酸酯 Polycarbonate
工作温度范围 Limiting temperatures	-40 °C ~+125 °C
依据UL94阻燃等级 Flammability acc.to UL94	V0
可拔插次数 Mechanical working life-mating cycles	≥ 500
插针 Contacts	
材料 Material	铜合金 Copper alloy
表面处理 Surface	镀银 / 镀金 Hard-silver/gold plated
接触电阻 Contact resistance	$\leq 3m \Omega$
冷压连接 Crimp terminal	
• mm ² /AWG	0.14-2.5mm ² /26-14



附件 Accessories

选择冷压连接时, 需要另外配针, 如下附件:
When cold pressing connection is selected, additional stitches are needed, as shown in the attachment below:



Contacts, silver-plated		Contacts, gold plated		ϕ (A)	Wire gauge		Recommended stripping length
Male Contacts	Female Contacts	Male Contacts	Female Contacts		(mm ²)	(AWG)	
10A-SM-0.37	10A-SF-0.37	10A-GM-0.37	10A-GF-0.37	0.9	0.14-0.37	26-22	8mm
10A-SM-0.5	10A-SF-0.5	10A-GM-0.5	10A-GF-0.5	1.1	0.50	20	8mm
10A-SM-0.75	10A-SF-0.75	10A-GM-0.75	10A-GF-0.75	1.3	0.75	18	8mm
10A-SM-1.0	10A-SF-1.0	10A-GM-1.0	10A-GF-1.0	1.45	1.00	18	8mm
10A-SM-1.5	10A-SF-1.5	10A-GM-1.5	10A-GF-1.5	1.75	1.50	16	8mm
10A-SM-2.5	10A-SF-2.5	10A-GM-2.5	10A-GF-2.5	2.25	2.50	14	6mm

工具 Tools



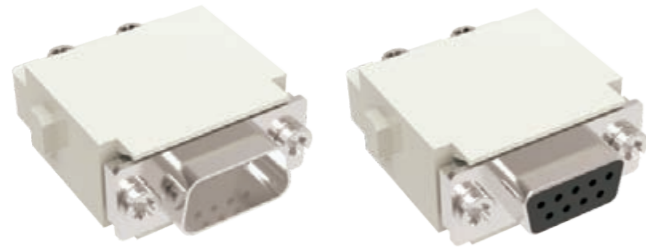
冷压钳 Crimping tool

压接线径 Wire gauge : 0.5~4.0mm² (AWG 20-12)
型号 Type : TL1-4.0

退针器 Removal tool

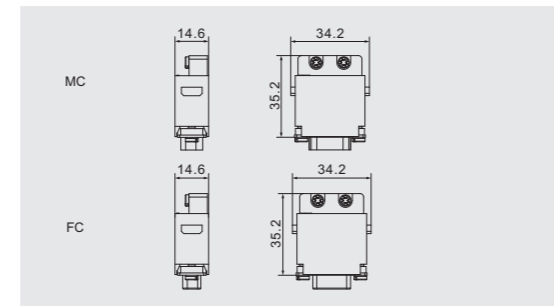
适用类型 For: 10A冷压针 10A Crimp contacts
型号 Type : RT-10A

DKE-009 D-Sub 模块 Module 50V 5A



DKE-009-MC

DKE-009-FC

 尺寸图及孔位图
Dimension and hole site


技术参数 Technical characteristics

规范 Specifications	DIN EN 60 664 DIN EN 61 984
插芯 Inserts	
依据EN 61 984的额定电压 Electrical data acc.to EN 61 984	
接插件针数 Number of contacts	9
• 额定电流 Rated current	5A
• 额定电压 Rated voltage	50V
• 额定脉冲电压 Rated impulse voltage	0.8KV
• 污染程度 Pollution degree	3
绝缘电阻 Insulation resistance	$\geq 10^{10} \Omega$
材料 Material	聚碳酸酯 Polycarbonate
工作温度范围 Limiting temperatures	-40 °C ~+125 °C
依据UL94阻燃等级 Flammability acc.to UL94	V0
可拔插次数 Mechanical working life-mating cycles	≥ 500
插针 Contacts	
材料 Material	铜合金 Copper alloy
表面处理 Surface	镀银 Hard-silver plated 镀金 Hard-gold plated
接触电阻 Contact resistance	$\leq 3m \Omega$
冷压连接 Crimp terminal	
• mm ²	0.09-0.82mm ²
• AWG	28-18

附件 Accessories

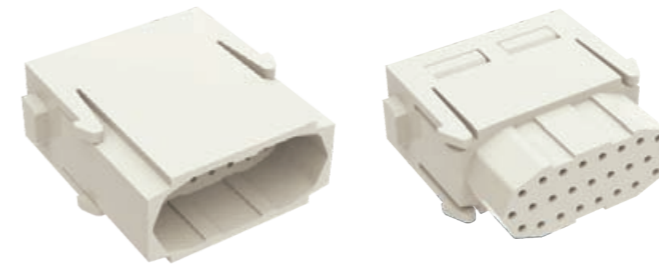
选择冷压连接时，需要另外配针，如下附件：

When cold pressing connection is selected, additional stitches are needed, as shown in the attachment below:



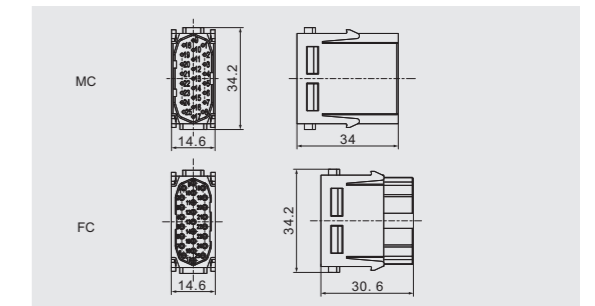
Contacts, silver-plated		Contacts, gold plated		(ϕA)	Wire gauge		Recommended stripping length
Male Contacts	Female Contacts	Male Contacts	Female Contacts		(mm ²)	(AWG)	
5A-SM-0.25	5A-SF-0.25	5A-GM-0.25	5A-GF-0.25	0.64	0.09-0.25	28-24	5mm
5A-SM-0.33	5A-SF-0.33	5A-GM-0.33	5A-GF-0.33	0.9	0.25-0.33	24-22	5mm
5A-SM-0.52	5A-SF-0.52	5A-GM-0.52	5A-GF-0.52	1.12	0.33-0.52	22-20	5mm

DMD-025 高密度型模块 50V 4A



DMD-025-MC

DMD-025-FC

 尺寸图及孔位图
Dimension and hole site


技术参数 Technical characteristics

规范 Specifications	DIN EN 60 664 DIN EN 61 984
插芯 Inserts	
依据EN 61 984的额定电压 Electrical data acc.to EN 61 984	
接插件针数 Number of contacts	25
• 额定电流 Rated current	4A
• 额定电压 Rated voltage	50V
• 额定脉冲电压 Rated impulse voltage	0.8KV
• 污染程度 Pollution degree	3
绝缘电阻 Insulation resistance	$\geq 10^{10} \Omega$
材料 Material	聚碳酸酯 Polycarbonate
工作温度范围 Limiting temperatures	-40 °C ~+125 °C
依据UL94阻燃等级 Flammability acc.to UL94	V0
可拔插次数 Mechanical working life-mating cycles	≥ 500
插针 Contacts	
材料 Material	铜合金 Copper alloy
表面处理 Surface	镀银 Hard-silver plated 镀金 Hard-gold plated
接触电阻 Contact resistance	$\leq 3m \Omega$
冷压连接 Crimp terminal	
• mm ²	0.09-0.52mm ²
• AWG	28-20

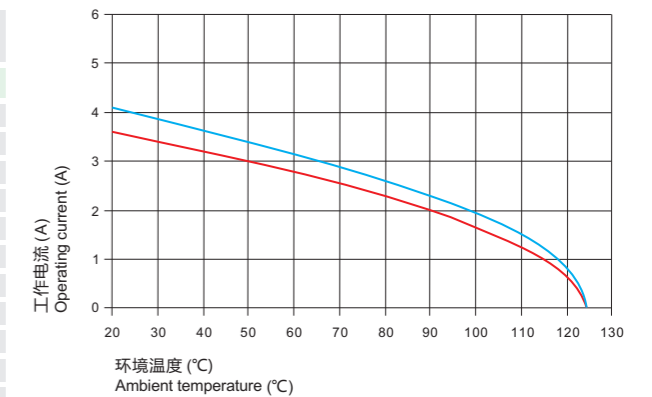
附件 Accessories

选择冷压连接时，需要另外配针，如下附件：

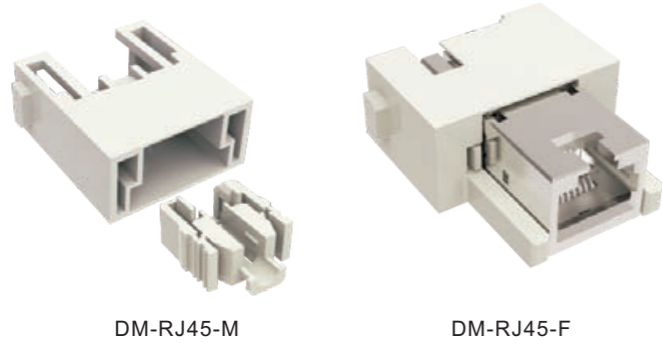
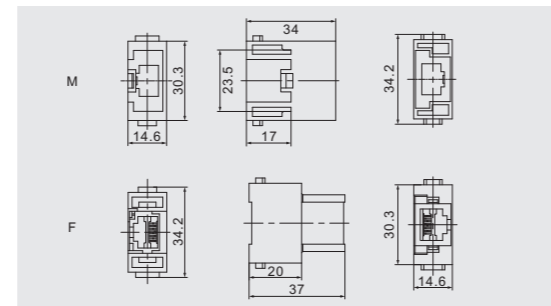
When cold pressing connection is selected, additional stitches are needed, as shown in the attachment below:



Contacts, silver-plated		Contacts, gold plated		(ϕA)	Wire gauge		Recommended stripping length
Male Contacts	Female Contacts	Male Contacts	Female Contacts		(mm ²)	(AWG)	
5A-SM-0.25	5A-SF-0.25	5A-GM-0.25	5A-GF-0.25	0.64	0.09-0.25	28-24	5mm
5A-SM-0.33	5A-SF-0.33	5A-GM-0.33	5A-GF-0.33	0.9	0.25-0.33	24-22	5mm
5A-SM-0.52	5A-SF-0.52	5A-GM-0.52	5A-GF-0.52	1.12	0.33-0.52	22-20	5mm



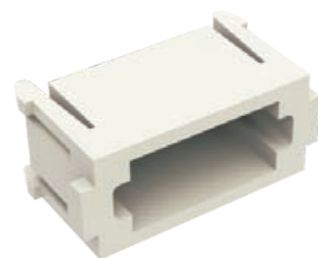
DM-RJ45 模块 Module 50V 1A


 尺寸图及孔位图
Dimension and hole site


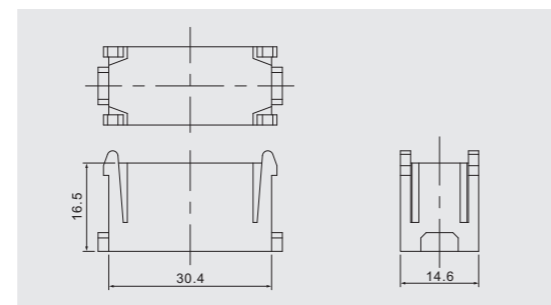
技术参数 Technical characteristics

规范 Specifications	DIN EN 60 664 DIN EN 61 984
插芯 Inserts	
依据EN 61 984的额定电压 Electrical data acc.to EN 61 984	
接插件针数 Number of contacts	8
• 额定电流 Rated current	1A
• 额定电压 Rated voltage	50V
• 额定脉冲电压 Rated impulse voltage	0.8KV
• 污染程度 Pollution degree	3
依据UL额定电压 Rated voltage acc. to UL	< 30V
传输特性 Transmission characteristics	超 5 类可达 100MHz Category 5/Class E up to 100 MHz
• 依据 Basis	ISO/IEC 24 702 ISO/IEC 11 801
传输速率 Transmission rate	10/100/1000 Mbit/s
绝缘电阻 Insulation resistance	≥ 10 ¹⁰ Ω
材料 Material	聚碳酸酯 Polycarbonate
工作温度范围 Limiting temperatures	-40 °C ~+ 85 °C
依据UL94阻燃等级 Flammability acc.to UL94	V0
可拔插次数 Mechanical working life-mating cycles	≥ 500

DM-000 空置模块 Module



DM-000

 尺寸图及孔位图
Dimension and hole site


外壳特性 Hoods & Housings Feature

3A系列

塑料外壳	
材料	聚碳酸酯
颜色	灰白
连锁元件	
连锁方式	塑料弹性压合
材料	聚酰胺
密封元件	丁腈橡胶
适用温度范围	-40~+125°C
阻燃等级	V0
防护等级 (连锁状态DIN EN 60529)	IP65

3A系列

金属外壳	
材料	压铸锌合金
颜色	灰色
连锁元件	
连锁方式	扣子
材料	金属镀锌
密封元件	丁腈橡胶
适用温度范围	-40~+125°C
阻燃等级	V0
防护等级 (连锁状态DIN EN 60529)	IP65

标准外壳 (10A,16A,32A,6B,10B,16B,24B,32B,48B)

材料	压铸铝合金
颜色	灰色
连锁元件	
连锁方式	扣子
材料	金属镀锌
密封元件	丁腈橡胶
适用温度范围	-40~+125°C
阻燃等级	V0
防护等级 (连锁状态DIN EN 60529)	IP65

DC系列

塑料外壳	
材料	聚碳酸酯
颜色	黑色
连锁元件	
连锁方式	塑料弹性压合
材料	聚酰胺
密封元件	丁腈橡胶
适用温度范围	-40~+125°C
阻燃等级	V0
防护等级 (连锁状态DIN EN 60529)	IP65

Size 3A

塑料 Hoods & Housings	
Material	Polycarbonate
Colour	Light grey(RAL7032)
Locking element	
Lever type	Plastic elasttic pressing
Material	Polymide
Hoods / Housings seal	NBR
Limiting tempertures	-40~+125°C
Flammability acc to UI94	V0
Degree of protection acc. To DIN EN 60529 for coupled connector	IP65

Size 3A

金属 Hoods & Housings	
Material	Zinc die-cast
Colour	Grey(RAL7037)
Locking element	
Lever type	Lever
Material	Metal zinc-plated
Hoods / Housings seal	NBR
Limiting tempertures	-40~+125°C
Flammability acc to UI94	V0
Degree of protection acc. To DIN EN 60529 for coupled connector	IP65

Standard Hoods & Housings (10A,16A,32A,6B,10B,16B,24B,32B,48B)

Material	Aluminium die-cast
Colour	Grey(RAL7037)
Locking element	
Lever type	Lever
Material	Metal zinc-plated
Hoods / Housings seal	NBR
Limiting tempertures	-40~+125°C
Flammability acc to UI94	V0
Degree of protection acc. To DIN EN 60529 for coupled connector	IP65

Size DC

塑料 Hoods & Housings	
Material	Polycarbonate
Colour	Black(RAL9005)
Locking element	
Lever type	Plastic elasttic pressing
Material	Polymide
Hoods / Housings seal	NBR
Limiting tempertures	-40~+125°C
Flammability acc to UI94	V0
Degree of protection acc. To DIN EN 60529 for coupled connector	IP65

D3A 塑料外壳 Plastic Hoods & Housings

防护等级 Degree of protection : IP65

外壳 Hoods & Housings	描述 Description	型号 Type	螺纹 Thread	图纸 Drawing
	上壳 侧出线 Hoods, side entry	D3A.P-SE-2g-M20 D3A.P-SE-2g-PG11	M20 PG11	
	上壳 顶出线 Hoods, top entry	D3A.P-TE-2g-M20 D3A.P-TE-2g-PG11	M20 PG11	
	下壳 不封底 Housings, bulkhead mounting	D3A.P-BK-1L	--	
	下壳 不封底 Housings, bulkhead mounting	D3A.P-BK-1L-SE	--	
	下壳 封底 Housings, surface mounting	D3A.P-SF-1L-M20	M20 PG11	
	下壳 不封底 Housings, bulkhead mounting	D3A.PBC-SF-1L-M20 D3A.PBC-SF-1L-PG11	M20 PG11	
	下壳 电缆对接 Housings, cable to cable	D3A.P-CCT-1L-M20 D3A.P-CCT-1L-PG11	M20 PG11	
	防护盖 Protection	D3A-CV-1L/1M (配公芯 for male insert) D3A-CV-1L/1F (配母芯 for female insert)	接线方式 Connect way	
	防护盖 Protection	D3A-CV-2g/1M (配公芯 for male insert) D3A-CV-2g/2M (配公芯 for male insert) D3A-CV-2g/1F (配母芯 for female insert) D3A-CV-2g/2F (配母芯 for female insert)		

D3A 金属外壳 Metal Hoods & Housings

防护等级 Degree of protection : IP65

外壳 Hoods & Housings	描述 Description	型号 Type	螺纹 Thread	图纸 Drawing
	上壳 侧出线 Hoods, side entry	D3A-SE-2g-M20 D3A-SE-2g-PG11 D3A-SE-2g-PG13.5	M20 PG11 PG13.5	
	上壳 顶出线 Hoods, top entry	D3A-TE-2g-M20 D3A-TE-2g-PG11 D3A-TE-2g-PG13.5	M20 PG11 PG13.5	
	下壳 不封底 Housings, bulkhead mounting	D3A-BK-1L	--	
	下壳 不封底 Housings, bulkhead mounting	D3A-BK-1L-MCV	--	
	下壳 不封底 Housings, bulkhead mounting	D3A-BK-SE-1L	--	
	下壳 不封底 Housings, bulkhead mounting	D3A-SF-1L-M20 D3A-SF-1L-PG11 D3A-SF-1L-PG13.5	M20 PG11 PG13.5	
	下壳 封底 Housings, surface mounting	D3A-BC-SF-1L-M20 D3A-BC-SF-1L-PG11 D3A-BC-SF-1L-PG13.5	M20 PG11 PG13.5	
	下壳 电缆对接 Housings, cable to cable	D3A-CCT-1L-M20 D3A-CCT-1L-PG11 D3A-CCT-1L-PG13.5	M20 PG11 PG13.5	
	防护盖 Protection	D3A-MCV-1L/1M (配公芯 for male insert) D3A-MCV-1L/1F (配母芯 for female insert)	接线方式 Connect way	
	防护盖 Protection	D3A-MCV-2g/1M (配公芯 for male insert) D3A-MCV-2g/2M (配公芯 for male insert) D3A-MCV-2g/1F (配母芯 for female insert) D3A-MCV-2g/2F (配母芯 for female insert)		

D10A 金属外壳 Metal Hoods & Housings

防护等级 Degree of protection : IP65

外壳 Hoods & Housings	描述 Description	型号 Type	螺纹 Thread	图纸 Drawing
	上壳 侧出线 Hoods, side entry	D10A-SE-2g-M20 D10A-SE-2g-PG13.5 D10A-SE-2g-PG16	M20 PG13.5 PG16	
	上壳 侧出线 高结构 Hoods, side entry, high construction	D10A-SEH-2g-M20 D10A-SEH-2g-M25 D10A-SEH-2g-PG16 D10A-SEH-2g-PG21	M20 M25 PG16 PG21	
	上壳 顶出线 Hoods, top entry	D10A-TE-2g-M20 D10A-TE-2g-PG13.5	M20 PG13.5	
	上壳 顶出线 高结构 Hoods, top entry, high construction	D10A-TEH-2g-M25 D10A-TEH-2g-PG16 D10A-TEH-2g-PG21	M25 PG16 PG21	
	下壳 不封底 Housings, bulkhead mounting	D10A-BK-1L 带塑料盖 With plastic cover D10A-BK-1L-CV 带金属盖 With metal cover D10A-BK-1L-MCV	- -	
	下壳 封底 Housings, surface mounting	D10A-SF-1L-M20 D10A-SF-1L-2M20 D10A-SF-1L-M25 D10A-SF-1L-PG16 D10A-SF-1L-2PG16 D10A-SF-1L-PG21 带塑料盖 / With plastic cover D10A-SF-1L-CV-M20 D10A-SF-1L-CV-2M20 D10A-SF-1L-CV-M25 D10A-SF-1L-CV-PG16 D10A-SF-1L-CV-2PG16 D10A-SF-1L-CV-PG21 带金属盖 / With metal cover D10A-SF-1L-MCV-M20 D10A-SF-1L-MCV-2M20 D10A-SF-1L-MCV-M25 D10A-SF-1L-MCV-PG16 D10A-SF-1L-MCV-2PG16 D10A-SF-1L-MCV-PG21	M20 2 X M20 M25 PG16 2 X PG16 PG21 M20 2 X M20 M25 PG16 2 X PG16 PG21 M20 2 X M20 M25 PG16 2 X PG16 PG21	
	金属盖 用于上壳 For hoods	D10A-MCV-1L/1S D10A-MCV-1L/2S	接线方式 Connect way	
	金属盖 用于下壳 For housings	D10A-MCV-2g/1S D10A-MCV-2g/2S	接线方式 Connect way	

D16A 金属外壳 Metal Hoods & Housings

防护等级 Degree of protection : IP65

外壳 Hoods & Housings	描述 Description	型号 Type	螺纹 Thread	图纸 Drawing
	上壳 侧出线 Hoods, side entry	D16A-SE-2g-M20 D16A-SE-2g-PG13.5 D16A-SE-2g-PG16	M20 PG13.5 PG16	
	上壳 侧出线 高结构 Hoods, side entry, high construction	D16A-SEH-2g-M25 D16A-SEH-2g-PG16 D16A-SEH-2g-PG21	M25 PG16 PG21	
	上壳 顶出线 Hoods, top entry	D16A-TE-2g-M20 D16A-TE-2g-PG13.5 D16A-TE-2g-PG16	M20 PG13.5 PG16	
	上壳 顶出线 高结构 Hoods, top entry, high construction	D16A-TEH-2g-M25 D16A-TEH-2g-PG16 D16A-TEH-2g-PG21	M25 PG16 PG21	
	下壳 不封底 Housings, bulkhead mounting	D16A-BK-1L 带塑料盖 With plastic cover D16A-BK-1L-CV 带金属盖 With metal cover D16A-BK-1L-MCV	- -	
	下壳 封底 Housings, surface mounting	D16A-SF-1L-M20 D16A-SF-1L-2M20 D16A-SF-1L-M25 D16A-SF-1L-2M25 D16A-SF-1L-PG16 D16A-SF-1L-2PG16 D16A-SF-1L-PG21 带塑料盖 With plastic cover D16A-SF-1L-CV-M20 D16A-SF-1L-CV-2M20 D16A-SF-1L-CV-M25 D16A-SF-1L-CV-2M25 D16A-SF-1L-CV-PG16 D16A-SF-1L-CV-2PG16 D16A-SF-1L-CV-PG21 带金属盖 With metal cover D16A-SF-1L-MCV-M20 D16A-SF-1L-MCV-2M20 D16A-SF-1L-MCV-M25 D16A-SF-1L-MCV-2M25 D16A-SF-1L-MCV-PG16 D16A-SF-1L-MCV-2PG16 D16A-SF-1L-MCV-PG21	M20 2 X M20 M25 2 X M25 PG16 2 X PG16 PG21 M20 2 X M20 M25 2 X M25 PG16 2 X PG16 PG21 M20 2 X M20 M25 2 X M25 PG16 2 X PG16 PG21	
	金属盖 用于上壳 For hoods	D16A-MCV-1L/1S D16A-MCV-1L/2S	接线方式 Connect way	
	金属盖 用于下壳 For housings	D16A-MCV-2g/1S D16A-MCV-2g/2S	接线方式 Connect way	

D32A 金属外壳 Metal Hoods & Housings

防护等级 Degree of protection : IP65

外壳 Hoods & Housings	描述 Description	型号 Type	螺纹 Thread	图纸 Drawing
	上壳 侧出线 Hoods, side entry	D32A-SE-4g-M25 D32A-SE-4g-PG21	M25 PG21	
	上壳 侧出线 高结构 Hoods, side entry, high construction	D32A-SEH-4g-M25 D32A-SEH-4g-M32 D32A-SEH-4g-PG21 D32A-SEH-4g-PG29	M25 M32 PG21 PG29	
	上壳 顶出线 高结构 Hoods, top entry, high construction	D32A-TEH-4g-M25 D32A-TEH-4g-M32 D32A-TEH-4g-PG21 D32A-TEH-4g-PG29	M25 M32 PG21 PG29	
	下壳 不封底 Housings, bulkhead mounting	D32A-BK-2L	-	
	下壳 封底 Housings, surface mounting	D32A-SF-2L-M25 D32A-SF-2L-M32 D32A-SF-2L-2M32 D32A-SF-2L-PG21 D32A-SF-2L-2PG21 D32A-SF-2L-PG29 D32A-SF-2L-2PG29	M25 M32 2 x M32 PG21 2 x PG21 PG29 2 x PG29	
	用于上壳 For hoods	D32A-CV-4C	-	
	用于电缆对接下壳 For cable to cable housings 用于下壳 For housings	D32A-CV-4g/1S D32A-CV-4g/2S	接线方式 Connect way	

D32A 金属外壳 Metal Hoods & Housings

防护等级 Degree of protection : IP65

外壳 Hoods & Housings	描述 Description	型号 Type	螺纹 Thread	图纸 Drawing
	上壳 侧出线 Hoods, side entry	D32A-SE-2L-M25 D32A-SE-2L-PG21	M25 PG21	
	上壳 侧出线 高结构 Hoods, side entry, high construction	D32A-SEH-2L-M25 D32A-SEH-2L-M32 D32A-SEH-2L-PG21 D32A-SEH-2L-PG29	M25 M32 PG21 PG29	
	上壳 顶出线 高结构 Hoods, top entry, high construction	D32A-TEH-2L-M25 D32A-TEH-2L-M32 D32A-TEH-2L-PG21 D32A-TEH-2L-PG29	M25 M32 PG21 PG29	
	下壳 不封底 Housings, bulkhead mounting	D32A-BK-4g 带塑料盖 With plastic cover D32A-BK-4g-CV 带金属盖 With metal cover D32A-BK-4g-MCV	-	
	下壳 封底 Housings, surface mounting	D32A-SF-4g-M25 D32A-SF-4g-M32 D32A-SF-4g-2M32 D32A-SF-4g-PG21 D32A-SF-4g-2PG21 D32A-SF-4g-PG29 D32A-SF-4g-2PG29 带塑料盖 With plastic cover D32A-SF-4g-CV-M25 D32A-SF-4g-CV-M32 D32A-SF-4g-CV-2M32 D32A-SF-4g-CV-PG21 D32A-SF-4g-CV-2PG21 D32A-SF-4g-CV-PG29 D32A-SF-4g-CV-2PG29 带金属盖 With metal cover D32A-SF-4g-MCV-M25 D32A-SF-4g-MCV-M32 D32A-SF-4g-MCV-2M32 D32A-SF-4g-MCV-PG21 D32A-SF-4g-MCV-2PG21 D32A-SF-4g-MCV-PG29 D32A-SF-4g-MCV-2PG29	M25 M32 2 x M32 PG21 2 x PG21 PG29 2 x PG29 M25 M32 2 x M32 PG21 2 x PG21 PG29 2 x PG29 M25 M32 2 x M32 PG21 2 x PG21 PG29 2 x PG29	

D6B 金属外壳 Metal Hoods & Housings

防护等级 Degree of protection : IP65

外壳 Hoods & Housings	描述 Description	型号 Type	螺纹 Thread	图纸 Drawing
	上壳 侧出线 Hoods, side entry	D6B-SE-2g-M20 D6B-SE-2g-M25 D6B-SE-2g-PG13.5 D6B-SE-2g-PG16	M20 M25 PG13.5 PG16	
	上壳 侧出线 高结构 Hoods, side entry, high construction	D6B-SEH-2g-M25 D6B-SEH-2g-M32 D6B-SEH-2g-PG21 D6B-SEH-2g-PG29	M25 M32 PG21 PG29	
	上壳 顶出线 Hoods, top entry	D6B-TE-2g-M20 D6B-TE-2g-M25 D6B-TE-2g-PG13.5 D6B-TE-2g-PG16	M20 M25 PG13.5 PG16	
	上壳 顶出线 高结构 Hoods, top entry, high construction	D6B-TEH-2g-M25 D6B-TEH-2g-M32 D6B-TEH-2g-PG21	M25 M32 PG21	
	下壳 电缆对接 Housings, cable to cable	D6B-CCT-1L-M20 D6B-CCT-1L-PG13.5 D6B-CCT-1L-PG16	M20 PG13.5 PG16	
	下壳 电缆对接 高结构 Housings, cable to cable high construction	D6B-CCTH-1L-M25 D6B-CCTH-1L-M32 D6B-CCTH-1L-PG21	M25 M32 PG21	

D6B 金属外壳 Metal Hoods & Housings

防护等级 Degree of protection : IP65

外壳 Hoods & Housings	描述 Description	型号 Type	螺纹 Thread	图纸 Drawing
	下壳 不封底 Housings, bulkhead mounting	D6B-BK-1L 带塑料盖 With plastic cover D6B-BK-1L-CV 带金属盖 With metal cover D6B-BK-1L-MCV	--	
	下壳 封底 Housings, surface mounting	D6B-SF-1L-M20 D6B-SF-1L-2M20 D6B-SF-1L-M25 D6B-SF-1L-2M25 D6B-SF-1L-PG13.5 D6B-SF-1L-2PG13.5 D6B-SF-1L-PG16 D6B-SF-1L-2PG16 带塑料盖 With plastic cover D6B-SF-1L-CV-M20 D6B-SF-1L-CV-2M20 D6B-SF-1L-CV-M25 D6B-SF-1L-CV-2M25 D6B-SF-1L-CV-PG13.5 D6B-SF-1L-CV-2PG13.5 D6B-SF-1L-CV-PG16 D6B-SF-1L-CV-2PG16 带金属盖 With metal cover D6B-SF-1L-MCV-M20 D6B-SF-1L-MCV-2M20 D6B-SF-1L-MCV-M25 D6B-SF-1L-MCV-2M25 D6B-SF-1L-MCV-PG16 D6B-SF-1L-MCV-2PG16	M20 2M20 M25 2M25 PG13.5 2PG13.5 PG16 2PG16 M20 2M20 M25 2M25 PG13.5 2PG13.5 PG16 2PG16 M20 2M20 M25 2M25 PG16 2PG16	
	下壳 封底 高结构 Housings, surface mounting high construction	D6B-SFH-1L-M25 D6B-SFH-1L-2M25 D6B-SFH-1L-M32 D6B-SFH-1L-2M32 D6B-SFH-1L-PG21 D6B-SFH-1L-2PG21 D6B-SFH-1L-PG29 D6B-SFH-1L-2PG29 带塑料盖 With plastic cover D6B-SFH-1L-CV-M25 D6B-SFH-1L-CV-2M25 D6B-SFH-1L-CV-M32 D6B-SFH-1L-CV-2M32 D6B-SFH-1L-CV-PG21 D6B-SFH-1L-CV-2PG21 D6B-SFH-1L-CV-PG29 D6B-SFH-1L-CV-2PG29 带金属盖 With metal cover D6B-SFH-1L-MCV-M25 D6B-SFH-1L-MCV-2M25 D6B-SFH-1L-MCV-M32 D6B-SFH-1L-MCV-2M32 D6B-SFH-1L-MCV-PG21 D6B-SFH-1L-MCV-PG29 D6B-SFH-1L-MCV-2PG29	M25 2M25 M32 2M32 PG21 2PG21 PG29 2PG29 M25 2M25 M32 2M32 PG21 2PG21 PG29 2PG29 M25 2M25 M32 2M32 PG21 2PG21 PG29 2PG29	

D10B 金属外壳 Metal Hoods & Housings

防护等级 Degree of protection : IP65

外壳 Hoods & Housings	描述 Description	型号 Type	螺纹 Thread	图纸 Drawing
	上壳 侧出线 Hoods, side entry	D10B-SE-2g-M20 D10B-SE-2g-M25 D10B-SE-2g-PG16	M20 M25 PG16	
	上壳 侧出线 高结构 Hoods, side entry, high construction	D10B-SEH-2g-M25 D10B-SEH-2g-M32 D10B-SEH-2g-PG21 D10B-SEH-2g-PG29	M25 M32 PG21 PG29	
	上壳 顶出线 Hoods, top entry	D10B-TE-2g-M20 D10B-TE-2g-M25 D10B-TE-2g-PG16	M20 M25 PG16	
	上壳 顶出线 高结构 Hoods, top entry, high construction	D10B-TEH-2g-M25 D10B-TEH-2g-M32 D10B-TEH-2g-PG21 D10B-TEH-2g-PG29	M25 M32 PG21 PG29	
	下壳 电缆对接 Housings, cable to cable	D10B-CCT-1L-M20 D10B-CCT-1L-M25 D10B-CCT-1L-PG16	M20 M25 PG16	
	下壳 电缆对接 高结构 Housings, cable to cable high construction	D10B-CCTH-1L-M25 D10B-CCTH-1L-M32 D10B-CCTH-1L-PG21 D10B-CCTH-1L-PG29	M25 M32 PG21 PG29	

D10B 金属外壳 Metal Hoods & Housings

防护等级 Degree of protection : IP65

外壳 Hoods & Housings	描述 Description	型号 Type	螺纹 Thread	图纸 Drawing
	下壳 不封底 Housings, bulkhead mounting	D10B-BK-1L 带塑料盖 With plastic cover D10B-BK-1L-CV 带金属盖 With metal cover D10B-BK-1L-MCV	-- -- --	
	下壳 封底 Housings, surface mounting	D10B-SF-1L-M20 D10B-SF-1L-2M20 D10B-SF-1L-M25 D10B-SF-1L-2M25 D10B-SF-1L-PG16 D10B-SF-1L-2PG16 带塑料盖 With plastic cover D10B-SF-1L-CV-M20 D10B-SF-1L-CV-2M20 D10B-SF-1L-CV-M25 D10B-SF-1L-CV-2M25 D10B-SF-1L-CV-PG16 D10B-SF-1L-CV-2PG16 带金属盖 With metal cover D10B-SF-1L-MCV-M20 D10B-SF-1L-MCV-2M20 D10B-SF-1L-MCV-M25 D10B-SF-1L-MCV-2M25 D10B-SF-1L-MCV-PG16 D10B-SF-1L-MCV-2PG16	M20 2M20 M25 2M25 PG16 2PG16 M20 2M20 M25 2M25 PG16 2PG16 M20 2M20 M25 2M25 PG16 2PG16	
	下壳 封底 高结构 Housings, surface mounting high construction	D10B-SFH-1L-M25 D10B-SFH-1L-2M25 D10B-SFH-1L-M32 D10B-SFH-1L-2M32 D10B-SFH-1L-PG21 D10B-SFH-1L-2PG21 D10B-SFH-1L-PG29 D10B-SFH-1L-2PG29 带塑料盖 With plastic cover D10B-SFH-1L-CV-M25 D10B-SFH-1L-CV-2M25 D10B-SFH-1L-CV-M32 D10B-SFH-1L-CV-2M32 D10B-SFH-1L-CV-PG21 D10B-SFH-1L-CV-2PG21 D10B-SFH-1L-CV-PG29 D10B-SFH-1L-CV-2PG29 带金属盖 With metal cover D10B-SFH-1L-MCV-M25 D10B-SFH-1L-MCV-2M25 D10B-SFH-1L-MCV-M32 D10B-SFH-1L-MCV-2M32 D10B-SFH-1L-MCV-PG21 D10B-SFH-1L-MCV-2PG21 D10B-SFH-1L-MCV-PG29 D10B-SFH-1L-MCV-2PG29	M25 2M25 M32 2M32 PG21 2PG21 PG29 2PG29 M25 2M25 M32 2M32 PG21 2PG21 PG29 2PG29 M25 2M25 M32 2M32 PG21 2PG21 PG29 2PG29	

D10B 金属外壳 Metal Hoods & Housings

防护等级 Degree of protection : IP65

外壳 Hoods & Housings	描述 Description	型号 Type	螺纹 Thread	图纸 Drawing
	上壳 侧出线 Hoods, side entry	D10B-SE-4g-M20 D10B-SE-4g-M25 D10B-SE-4g-PG16	M20 M25 PG16	
	上壳 侧出线 高结构 Hoods, side entry, high construction	D10B-SEH-4g-M25 D10B-SEH-4g-M32 D10B-SEH-4g-PG21 D10B-SEH-4g-PG29	M25 M32 PG21 PG29	
	上壳 顶出线 Hoods, top entry	D10B-TE-4g-M20 D10B-TE-4g-M25 D10B-TE-4g-PG16	M20 M25 PG16	
	上壳 顶出线 高结构 Hoods, top entry, high construction	D10B-TEH-4g-M25 D10B-TEH-4g-M32 D10B-TEH-4g-PG21 D10B-TEH-4g-PG29	M25 M32 PG21 PG29	
	下壳 不封底 Housings, bulkhead mounting	D10B-BK-2L	-	
	下壳 封底 Housings, surface mounting	D10B-SF-2L-M20 D10B-SF-2L-2M20 D10B-SF-2L-M25 D10B-SF-2L-2M25 D10B-SF-2L-PG16 D10B-SF-2L-2PG16	M20 2M20 M25 2M25 PG16 2PG16	

D10B 金属外壳 Metal Hoods & Housings

防护等级 Degree of protection : IP65

外壳 Hoods & Housings	描述 Description	型号 Type	螺纹 Thread	图纸 Drawing
	下壳 封底 高结构 Housings, surface mounting high construction	D10B-SFH-2L-M25 D10B-SFH-2L-2M25 D10B-SFH-2L-M32 D10B-SFH-2L-2M32 D10B-SFH-2L-PG21 D10B-SFH-2L-2PG21 D10B-SFH-2L-PG29 D10B-SFH-2L-2PG29	M25 2M25 M32 2M32 PG21 2PG21 PG29 2PG29	
	下壳 电缆对接 Housings, cable to cable	D10B-CCT-2L-M20 D10B-CCT-2L-M25 D10B-CCT-2L-PG16	M20 M25 PG16	
	下壳 电缆对接 高结构 Housings, cable to cable high construction	D10B-CCTH-2L-M25 D10B-CCTH-2L-M32 D10B-CCTH-2L-PG21 D10B-CCTH-2L-PG29	M25 M32 PG21 PG29	
	防护盖 Protection	带塑料盖 With plastic cover D10B-CV-4C	-	
	防护盖 Protection	带塑料盖 With plastic cover D10B-CV-4g/1S D10B-CV-4g/2S 带金属盖 With metal cover D10B-MCV-4g/1S D10B-MCV-4g/2S	1S 2S	

D10B 金属外壳 Metal Hoods & Housings

防护等级 Degree of protection : IP65

外壳 Hoods & Housings	描述 Description	型号 Type	螺纹 Thread	图纸 Drawing
	上壳 侧出线 Hoods, side entry	D10B-SE-2L-M20 D10B-SE-2L-PG16	M20 PG16	
	上壳 侧出线 高结构 Hoods, side entry, high construction	D10B-SEH-2L-M25 D10B-SEH-2L-M32 D10B-SEH-2L-PG21 D10B-SEH-2L-PG29	M25 M32 PG21 PG29	
	上壳 顶出线 Hoods, top entry	D10B-TE-2L-M20 D10B-TE-2L-PG16	M20 PG16	
	上壳 顶出线 高结构 Hoods, top entry, high construction	D10B-TEH-2L-M25 D10B-TEH-2L-M32 D10B-TEH-2L-PG21 D10B-TEH-2L-PG29	M25 M32 PG21 PG29	
	下壳 不封底 Housings, bulkhead mounting	D10B-BK-4g 带塑料盖 With plastic cover D10B-BK-4g-CV 带金属盖 With metal cover D10B-BK-4g-MCV	-	

D10B 金属外壳 Metal Hoods & Housings

防护等级 Degree of protection : IP65

外壳 Hoods & Housings	描述 Description	型号 Type	螺纹 Thread	图纸 Drawing
	下壳 封底 Housings, surface mounting	D10B-SF-4g-M20 D10B-SF-4g-2M20 D10B-SF-4g-M25 D10B-SF-4g-2M25 D10B-SF-4g-PG16 D10B-SF-4g-2PG16 带塑料盖 With plastic cover D10B-SF-4g-CV-M20 D10B-SF-4g-CV-2M20 D10B-SF-4g-CV-M25 D10B-SF-4g-CV-2M25 D10B-SF-4g-CV-PG16 D10B-SF-4g-CV-2PG16 带金属盖 With metal cover D10B-SF-4g-MCV-M20 D10B-SF-4g-MCV-2M20 D10B-SF-4g-MCV-M25 D10B-SF-4g-MCV-2M25 D10B-SF-4g-MCV-PG16 D10B-SF-4g-MCV-2PG16	M20 2M20 M25 2M25 PG16 2PG16 M20 2M20 M25 2M25 PG16 2PG16	
	下壳 封底 高结构 Housings, surface mounting high construction	D10B-SFH-4g-M25 D10B-SFH-4g-2M25 D10B-SFH-4g-M32 D10B-SFH-4g-2M32 D10B-SFH-4g-PG21 D10B-SFH-4g-2PG21 D10B-SFH-4g-PG29 D10B-SFH-4g-2PG29 带塑料盖 With plastic cover D10B-SFH-4g-CV-M25 D10B-SFH-4g-CV-2M25 D10B-SFH-4g-CV-M32 D10B-SFH-4g-CV-2M32 D10B-SFH-4g-CV-PG21 D10B-SFH-4g-CV-2PG21 D10B-SFH-4g-CV-PG29 D10B-SFH-4g-CV-2PG29 带金属盖 With metal cover D10B-SFH-4g-MCV-M25 D10B-SFH-4g-MCV-2M25 D10B-SFH-4g-MCV-M32 D10B-SFH-4g-MCV-2M32 D10B-SFH-4g-MCV-PG21 D10B-SFH-4g-MCV-2PG21 D10B-SFH-4g-MCV-PG29 D10B-SFH-4g-MCV-2PG29	M25 2M25 M32 2M32 PG21 2PG21 PG29 2PG29 M25 2M25 M32 2M32 PG21 2PG21 PG29 2PG29 M25 2M25 M32 2M32 PG21 2PG21 PG29 2PG29	

D16B 金属外壳 Metal Hoods & Housings

防护等级 Degree of protection : IP65

外壳 Hoods & Housings	描述 Description	型号 Type	螺纹 Thread	图纸 Drawing
	上壳 侧出线 Hoods, side entry	D16B-SE-2g-M25 D16B-SE-2g-M32 D16B-SE-2g-PG21	M25 M32 PG21	
	上壳 侧出线 高结构 Hoods, side entry, high construction	D16B-SEH-2g-M25 D16B-SEH-2g-M32 D16B-SEH-2g-M40 D16B-SEH-2g-PG21 D16B-SEH-2g-PG29	M25 M32 M40 PG21 PG29	
	上壳 顶出线 Hoods, top entry	D16B-TE-2g-M25 D16B-TE-2g-M32 D16B-TE-2g-PG21	M25 M32 PG21	
	上壳 顶出线 高结构 Hoods, top entry, high construction	D16B-TEH-2g-M32 D16B-TEH-2g-M40 D16B-TEH-2g-PG21 D16B-TEH-2g-PG29	M32 M40 PG21 PG29	
	下壳 电缆对接 Housings, cable to cable	D16B-CCT-1L-M25 D16B-CCT-1L-M32 D16B-CCT-1L-PG21	M25 M32 PG21	
	下壳 电缆对接 高结构 Housings, cable to cable high construction	D16B-CCTH-1L-M32 D16B-CCTH-1L-M40 D16B-CCTH-1L-PG21 D16B-CCTH-1L-PG29	M32 M40 PG21 PG29	

D16B 金属外壳 Metal Hoods & Housings

防护等级 Degree of protection : IP65

外壳 Hoods & Housings	描述 Description	型号 Type	螺纹 Thread	图纸 Drawing
	下壳 不封底 Housings, bulkhead mounting	D16B-BK-1L 带塑料盖 With plastic cover D16B-BK-1L-CV 带金属盖 With metal cover D16B-BK-1L-MCV	--	
	下壳 封底 Housings, surface mounting	D16B-SF-1L-M25 D16B-SF-1L-2M25 D16B-SF-1L-PG21 D16B-SF-1L-2PG21 带塑料盖 With plastic cover D16B-SF-1L-CV-M25 D16B-SF-1L-CV-2M25 D16B-SF-1L-CV-PG21 D16B-SF-1L-CV-2PG21 带金属盖 With metal cover D16B-SF-1L-MCV-M25 D16B-SF-1L-MCV-2M25 D16B-SF-1L-MCV-PG21 D16B-SF-1L-MCV-2PG21	M25 2M25 PG21 2PG21 M25 2M25 PG21 2PG21 M25 2M25 PG21 2PG21	
	下壳 封底 高结构 Housings, surface mounting high construction	D16B-SFH-1L-M32 D16B-SFH-1L-2M32 D16B-SFH-1L-PG21 D16B-SFH-1L-2PG21 D16B-SFH-1L-PG29 D16B-SFH-1L-2PG29 带塑料盖 With plastic cover D16B-SFH-1L-CV-M32 D16B-SFH-1L-CV-2M32 D16B-SFH-1L-CV-PG21 D16B-SFH-1L-CV-2PG21 D16B-SFH-1L-CV-PG29 D16B-SFH-1L-CV-2PG29 带金属盖 With metal cover D16B-SFH-1L-MCV-M32 D16B-SFH-1L-MCV-2M32 D16B-SFH-1L-MCV-PG21 D16B-SFH-1L-MCV-2PG21 D16B-SFH-1L-MCV-PG29 D16B-SFH-1L-MCV-2PG29	M32 2M32 PG21 2PG21 PG29 2PG29 M32 2M32 PG21 2PG21 PG29 2PG29 M32 2M32 PG21 2PG21 PG29 2PG29	

D16B 金属外壳 Metal Hoods & Housings

防护等级 Degree of protection : IP65

外壳 Hoods & Housings	描述 Description	型号 Type	螺纹 Thread	图纸 Drawing
	上壳 侧出线 Hoods, side entry	D16B-SE-4g-M25 D16B-SE-4g-M32 D16B-SE-4g-PG21	M25 M32 PG21	
	上壳 侧出线 高结构 Hoods, side entry, high construction	D16B-SEH-4g-M25 D16B-SEH-4g-M32 D16B-SEH-4g-M40 D16B-SEH-4g-PG21 D16B-SEH-4g-PG29	M25 M32 M40 PG21 PG29	
	上壳 顶出线 Hoods, top entry	D16B-TE-4g-M25 D16B-TE-4g-M32 D16B-TE-4g-PG21	M25 M32 PG21	
	上壳 顶出线 高结构 Hoods, top entry, high construction	D16B-TEH-4g-M32 D16B-TEH-4g-M40 D16B-TEH-4g-PG21 D16B-TEH-4g-PG29	M32 M40 PG21 PG29	
	下壳 不封底 Housings, bulkhead mounting	D16B-BK-2L	-	
	下壳 封底 Housings, surface mounting	D16B-SF-2L-M25 D16B-SF-2L-2M25 D16B-SF-2L-PG21 D16B-SF-2L-2PG21	M25 2M25 PG16 2PG16	

D16B 金属外壳 Metal Hoods & Housings

防护等级 Degree of protection : IP65

外壳 Hoods & Housings	描述 Description	型号 Type	螺纹 Thread	图纸 Drawing
	下壳 封底 高结构 Housings, surface mounting high construction	D16B-SFH-2L-M25 D16B-SFH-2L-2M25 D16B-SFH-2L-M32 D16B-SFH-2L-2M32 D16B-SFH-2L-M40 D16B-SFH-2L-2M40 D16B-SFH-2L-PG21 D16B-SFH-2L-2PG21 D16B-SFH-2L-PG29 D16B-SFH-2L-2PG29	M25 2M25 M32 2M32 M40 2M40 PG21 2PG21 PG29 2PG29	
	下壳 电缆对接 Housings, cable to cable	D16B-CCT-2L-M25 D16B-CCT-2L-M32 D16B-CCT-2L-PG21	M25 M32 PG21	
	下壳 电缆对接 高结构 Housings, cable to cable high construction	D16B-CCTH-2L-M32 D16B-CCTH-2L-M40 D16B-CCTH-2L-PG21 D16B-CCTH-2L-PG29	M32 M40 PG21 PG29	
	防护盖 Protection	带塑料盖 With plastic cover D16B-CV-4C	-	
	防护盖 Protection	带金属盖 With metal cover D16B-MCV-4g/1S D16B-MCV-4g/2S	1S 2S	

D16B 金属外壳 Metal Hoods & Housings

防护等级 Degree of protection : IP65

外壳 Hoods & Housings	描述 Description	型号 Type	螺纹 Thread	图纸 Drawing
	上壳 侧出线 Hoods, side entry	D16B-SE-2L-M25 D16B-SE-2L-M32 D16B-SE-2L-PG21	M25 M32 PG21	
	上壳 侧出线 高结构 Hoods, side entry, high construction	D16B-SEH-2L-M25 D16B-SEH-2L-M32 D16B-SEH-2L-M40 D16B-SEH-2L-PG21 D16B-SEH-2L-PG29	M25 M32 M40 PG21 PG29	
	上壳 顶出线 Hoods, top entry	D16B-TE-2L-M25 D16B-TE-2L-M32 D16B-TE-2L-PG21	M25 M32 PG21	
	上壳 顶出线 高结构 Hoods, top entry, high construction	D16B-TEH-2L-M25 D16B-TEH-2L-M32 D16B-TEH-2L-M40 D16B-TEH-2L-PG21 D16B-TEH-2L-PG29	M25 M32 M40 PG21 PG29	
	下壳 不封底 Housings, bulkhead mounting	D16B-BK-4g 带塑料盖 With plastic cover D16B-BK-4g-CV 带金属盖 With metal cover D16B-BK-4g-MCV	- - -	

D16B 金属外壳 Metal Hoods & Housings

防护等级 Degree of protection : IP65

外壳 Hoods & Housings	描述 Description	型号 Type	螺纹 Thread	图纸 Drawing
	下壳 封底 Housings, surface mounting	D16B-SF-4g-M25 D16B-SF-4g-2M25 D16B-SF-4g-PG21 D16B-SF-4g-2PG21	M25 2M25 PG21 2PG21	
	带塑料盖 With plastic cover D16B-SF-4g-CV-M25 D16B-SF-4g-CV-2M25 D16B-SF-4g-CV-PG21 D16B-SF-4g-CV-2PG21		M25 2M25 PG21 2PG21	
	带金属盖 With metal cover D16B-SF-4g-MCV-M25 D16B-SF-4g-MCV-2M25 D16B-SF-4g-MCV-PG21 D16B-SF-4g-MCV-2PG21		M25 2M25 PG21 2PG21	
	下壳 封底 高结构 Housings, surface mounting high construction	D16B-SFH-4g-M32 D16B-SFH-4g-2M32 D16B-SFH-4g-PG21 D16B-SFH-4g-2PG21 D16B-SFH-4g-PG29 D16B-SFH-4g-2PG29	M32 2M32 PG21 2PG21 PG29 2PG29	
	带塑料盖 With plastic cover D16B-SFH-4g-CV-M32 D16B-SFH-4g-CV-2M32 D16B-SFH-4g-CV-PG21 D16B-SFH-4g-CV-2PG21 D16B-SFH-4g-CV-PG29 D16B-SFH-4g-CV-2PG29		M32 2M32 PG21 2PG21 PG29 2PG29	
	带金属盖 With metal cover D16B-SFH-4g-MCV-M32 D16B-SFH-4g-MCV-2M32 D16B-SFH-4g-MCV-PG21 D16B-SFH-4g-MCV-2PG21 D16B-SFH-4g-MCV-PG29 D16B-SFH-4g-MCV-2PG29		M32 2M32 PG21 2PG21 PG29 2PG29	

D24B 金属外壳 Metal Hoods & Housings

防护等级 Degree of protection : IP65

外壳 Hoods & Housings	描述 Description	型号 Type	螺纹 Thread	图纸 Drawing
	上壳 侧出线 Hoods, side entry	D24B-SE-2g-M25 D24B-SE-2g-M32 D24B-SE-2g-PG21	M25 M32 PG21	
	上壳 侧出线 高结构 Hoods, side entry, high construction	D24B-SEH-2g-M32 D24B-SEH-2g-M40 D24B-SEH-2g-PG21 D24B-SEH-2g-PG29	M32 M40 PG21 PG29	
	上壳 顶出线 Hoods, top entry	D24B-TE-2g-M25 D24B-TE-2g-M32 D24B-TE-2g-PG21	M25 M32 PG21	
	上壳 顶出线 高结构 Hoods, top entry, high construction	D24B-TEH-2g-M32 D24B-TEH-2g-M40 D24B-TEH-2g-PG21 D24B-TEH-2g-PG29	M32 M40 PG21 PG29	
	下壳 电缆对接 Housings, cable to cable	D24B-CCT-1L-M25 D24B-CCT-1L-M32 D24B-CCT-1L-PG21	M25 M32 PG21	
	下壳 电缆对接 高结构 Housings, cable to cable high construction	D24B-CCTH-1L-M32 D24B-CCTH-1L-M40 D24B-CCTH-1L-PG21 D24B-CCTH-1L-PG29	M32 M40 PG21 PG29	

D24B 金属外壳 Metal Hoods & Housings

防护等级 Degree of protection : IP65

外壳 Hoods & Housings	描述 Description	型号 Type	螺纹 Thread	图纸 Drawing
	下壳 不封底 Housings, bulkhead mounting	D24B-BK-1L 带塑料盖 With plastic cover D24B-BK-1L-CV 带金属盖 With metal cover D24B-BK-1L-MCV	--	
	下壳 封底 Housings, surface mounting	D24B-SF-1L-M25 D24B-SF-1L-2M25 D24B-SF-1L-PG21 D24B-SF-1L-2PG21 带塑料盖 With plastic cover D24B-SF-1L-CV-M25 D24B-SF-1L-CV-2M25 D24B-SF-1L-CV-PG21 D24B-SF-1L-CV-2PG21 带金属盖 With metal cover D24B-SF-1L-MCV-M25 D24B-SF-1L-MCV-2M25 D24B-SF-1L-MCV-PG21 D24B-SF-1L-MCV-2PG21	M25 2M25 PG21 2PG21 M25 2M25 PG21 2PG21 M25 2M25 PG21 2PG21	
	下壳 封底 高结构 Housings, surface mounting high construction	D24B-SFH-1L-M32 D24B-SFH-1L-2M32 D24B-SFH-1L-PG21 D24B-SFH-1L-2PG21 D24B-SFH-1L-PG29 D24B-SFH-1L-2PG29 带塑料盖 With plastic cover D24B-SFH-1L-CV-M32 D24B-SFH-1L-CV-2M32 D24B-SFH-1L-CV-PG21 D24B-SFH-1L-CV-2PG21 D24B-SFH-1L-CV-PG29 D24B-SFH-1L-CV-2PG29 带金属盖 With metal cover D24B-SFH-1L-MCV-M32 D24B-SFH-1L-MCV-2M32 D24B-SFH-1L-MCV-PG21 D24B-SFH-1L-MCV-2PG21 D24B-SFH-1L-MCV-PG29 D24B-SFH-1L-MCV-2PG29	M32 2M32 PG21 2PG21 PG29 2PG29 M32 2M32 PG21 2PG21 PG29 2PG29 M32 2M32 PG21 2PG21 PG29 2PG29	

D24B 金属外壳 Metal Hoods & Housings

防护等级 Degree of protection : IP65

外壳 Hoods & Housings	描述 Description	型号 Type	螺纹 Thread	图纸 Drawing
	上壳 侧出线 Hoods, side entry	D24B-SE-4g-M25 D24B-SE-4g-M32 D24B-SE-4g-PG21	M25 M32 PG21	
	上壳 侧出线 高结构 Hoods, side entry, high construction	D24B-SEH-4g-M32 D24B-SEH-4g-M40 D24B-SEH-4g-PG21 D24B-SEH-4g-PG29	M32 M40 PG21 Pg29	
	上壳 顶出线 Hoods, top entry	D24B-TE-4g-M25 D24B-TE-4g-M32 D24B-TE-4g-PG21	M25 M32 PG21	
	上壳 顶出线 高结构 Hoods, top entry, high construction	D24B-TEH-4g-M32 D24B-TEH-4g-M40 D24B-TEH-4g-PG21 D24B-TEH-4g-PG29	M32 M40 PG21 PG29	
	下壳 不封底 Housings, bulkhead mounting	D24B-BK-2L	-	
	下壳 封底 Housings, surface mounting	D24B-SF-2L-M25 D24B-SF-2L-2M25 D24B-SF-2L-PG21 D24B-SF-2L-2PG21	M25 2M25 PG16 2PG16	

D24B 金属外壳 Metal Hoods & Housings

防护等级 Degree of protection : IP65

外壳 Hoods & Housings	描述 Description	型号 Type	螺纹 Thread	图纸 Drawing
	下壳 封底 高结构 Housings, surface mounting high construction	D24B-SFH-2L-M32 D24B-SFH-2L-2M32 D24B-SFH-2L-M40 D24B-SFH-2L-2M40 D24B-SFH-2L-PG21 D24B-SFH-2L-PG29 D24B-SFH-2L-2PG29	M32 2M32 M40 2M40 PG21 2PG21 PG29 2PG29	
	下壳 电缆对接 Housings, cable to cable	D24B-CCT-2L-M25 D24B-CCT-2L-M32 D24B-CCT-2L-PG21	M25 M32 PG21	
	下壳 电缆对接 高结构 Housings, cable to cable high construction	D24B-CCTH-2L-M32 D24B-CCTH-2L-M40 D24B-CCTH-2L-PG21 D24B-CCTH-2L-PG29	M32 M40 PG21 PG29	
	防护盖 Protection	带塑料盖 With plastic cover D24B-CV-4C	-	
	防护盖 Protection	带金属盖 With metal cover D24B-MCV-4g/1S D24B-MCV-4g/2S	1S 2S	

D24B 金属外壳 Metal Hoods & Housings

防护等级 Degree of protection : IP65

外壳 Hoods & Housings	描述 Description	型号 Type	螺纹 Thread	图纸 Drawing
	上壳 侧出线 Hoods, side entry	D24B-SE-2L-M25 D24B-SE-2L-M32 D24B-SE-2L-PG21	M25 M32 PG21	
	上壳 侧出线 高结构 Hoods, side entry, high construction	D24B-SEH-2L-M32 D24B-SEH-2L-M40 D24B-SEH-2L-PG21 D24B-SEH-2L-PG29	M32 M40 PG21 Pg29	
	上壳 顶出线 Hoods, top entry	D24B-TE-2L-M25 D24B-TE-2L-M32 D24B-TE-2L-PG21	M25 M32 PG21	
	上壳 顶出线 高结构 Hoods, top entry, high construction	D24B-TEH-2L-M32 D24B-TEH-2L-M40 D24B-TEH-2L-PG21 D24B-TEH-2L-PG29	M32 M40 PG21 PG29	
	下壳 不封底 Housings, bulkhead mounting	D24B-BK-4g 带塑料盖 With plastic cover D24B-BK-4g-CV 带金属盖 With metal cover D24B-BK-4g-MCV	-- -- --	

D24B 金属外壳 Metal Hoods & Housings

防护等级 Degree of protection : IP65

外壳 Hoods & Housings	描述 Description	型号 Type	螺纹 Thread	图纸 Drawing
	下壳 封底 Housings, surface mounting	D24B-SF-4g-M25 D24B-SF-4g-2M25 D24B-SF-4g-PG21 D24B-SF-4g-2PG21 带塑料盖 With plastic cover D24B-SF-4g-CV-M25 D24B-SF-4g-CV-2M25 D24B-SF-4g-CV-PG21 D24B-SF-4g-CV-2PG21 带金属盖 With metal cover D24B-SF-4g-MCV-M25 D24B-SF-4g-MCV-2M25 D24B-SF-4g-MCV-PG21 D24B-SF-4g-MCV-2PG21	M25 2M25 PG21 2PG21 M25 2M25 PG21 2PG21 M25 2M25 PG21 2PG21	
	下壳 封底 高结构 Housings, surface mounting high construction	D24B-SFH-4g-M32 D24B-SFH-4g-2M32 D24B-SFH-4g-PG21 D24B-SFH-4g-2PG21 D24B-SFH-4g-PG29 D24B-SFH-4g-2PG29 带塑料盖 With plastic cover D24B-SFH-4g-CV-M32 D24B-SFH-4g-CV-2M32 D24B-SFH-4g-CV-PG21 D24B-SFH-4g-CV-2PG21 D24B-SFH-4g-CV-PG29 D24B-SFH-4g-CV-2PG29 带金属盖 With metal cover D24B-SFH-4g-MCV-M32 D24B-SFH-4g-MCV-2M32 D24B-SFH-4g-MCV-PG21 D24B-SFH-4g-MCV-2PG21 D24B-SFH-4g-MCV-PG29 D24B-SFH-4g-MCV-2PG29	M32 2M32 PG21 2PG21 PG29 2PG29 M32 2M32 PG21 2PG21 PG29 2PG29 M32 2M32 PG21 2PG21 PG29 2PG29	

D32B 金属外壳 Metal Hoods & Housings

防护等级 Degree of protection : IP65

外壳 Hoods & Housings	描述 Description	型号 Type	螺纹 Thread	图纸 Drawing
	上壳 侧出线 Hoods, side entry	D32B-SE-2g-M32 D32B-SE-2g-M40 D32B-SE-2g-M50 D32B-SE-2g-PG29 D32B-SE-2g-PG36 D32B-SE-2g-PG42	M32 M40 M50 PG29 PG36 PG42	
	上壳 顶出线 Hoods, top entry	D32B-TE-2g-M32 D32B-TE-2g-M40 D32B-TE-2g-M50 D32B-TE-2g-PG29 D32B-TE-2g-PG36 D32B-TE-2g-PG42	M32 M40 M50 PG29 PG36 PG42	
	下壳 不封底 Housings, bulkhead mounting	D32B-BK-1L 带塑料盖 With plastic cover D32B-BK-1L-CV	-- --	
	下壳 封底 Housings, surface mounting	D32B-SF-1L-M32 D32B-SF-1L-2M32 D32B-SF-1L-M40 D32B-SF-1L-2M40 D32B-SF-1L-PG29 D32B-SF-1L-2PG29 D32B-SF-1L-PG36 D32B-SF-1L-2PG36 带塑料盖 With plastic cover D32B-SF-1L-CV-M32 D32B-SF-1L-CV-2M32 D32B-SF-1L-CV-M40 D32B-SF-1L-CV-2M40 D32B-SF-1L-CV-PG29 D32B-SF-1L-CV-2PG29 D32B-SF-1L-CV-PG36 D32B-SF-1L-CV-2PG36	M32 2M32 M40 2M40 PG29 2PG29 PG36 2PG36 M32 2M32 M40 2M40 PG29 2PG29 PG36 2PG36	

D32B 金属外壳 Metal Hoods & Housings

防护等级 Degree of protection : IP65

外壳 Hoods & Housings	描述 Description	型号 Type	螺纹 Thread	图纸 Drawing
	上壳 侧出线 Hoods, side entry	D32B-SE-4g-M32 D32B-SE-4g-M40 D32B-SE-4g-M50 D32B-SE-4g-PG29 D32B-SE-4g-PG36 D32B-SE-4g-PG42	M32 M40 M50 PG29 PG36 PG42	
	上壳 顶出线 Hoods, top entry	D32B-TE-4g-M32 D32B-TE-4g-M40 D32B-TE-4g-M50 D32B-TE-4g-PG29 D32B-TE-4g-PG36 D32B-TE-4g-PG42	M32 M40 M50 PG29 PG36 PG42	
	下壳 不封底 Housings, bulkhead mounting	D32B-BK-2L	--	
	下壳 封底 高结构 Housings, surface mounting high construction	D32B-SF-2L-M32 D32B-SF-2L-2M32 D32B-SF-2L-M40 D32B-SF-2L-2M40 D32B-SF-2L-PG29 D32B-SF-2L-2PG29 D32B-SF-2L-PG36 D32B-SF-2L-2PG36 D32B-SF-2L-2PG42	M32 2M32 M40 2M40 PG29 2PG29 PG36 2PG36 2PG42	
	下壳 电缆对接 Housings, cable to cable	D32B-CCT-2L-M32 D32B-CCT-2L-M40 D32B-CCT-2L-M50 D32B-CCT-2L-PG29 D32B-CCT-2L-PG36 D32B-CCT-2L-PG42	M32 M40 M50 PG29 PG36 PG42	

D48B 金属外壳 Metal Hoods & Housings

防护等级 Degree of protection : IP65

外壳 Hoods & Housings	描述 Description	型号 Type	螺纹 Thread	图纸 Drawing
	上壳 侧出线 Hoods, side entry	D48B-SE-2g-M32 D48B-SE-2g-M40 D48B-SE-2g-M50 D48B-SE-2g-PG29 D48B-SE-2g-PG36 D48B-SE-2g-PG42	M32 M40 M50 PG29 PG36 PG42	
	上壳 顶出线 Hoods, top entry	D48B-TE-2g-M32 D48B-TE-2g-M40 D48B-TE-2g-M50 D48B-TE-2g-PG29 D48B-TE-2g-PG36 D48B-TE-2g-PG42	M32 M40 M50 PG29 PG36 PG42	
	下壳 不封底 Housings, bulkhead mounting	D48B-BK-1L 带塑料盖 With plastic cover D48B-BK-1L-CV	-- --	
	下壳 封底 Housings, surface mounting	D48B-SF-1L-M32 D48B-SF-1L-2M32 D48B-SF-1L-M40 D48B-SF-1L-2M40 D48B-SF-1L-PG29 D48B-SF-1L-2PG29 D48B-SF-1L-PG36 D48B-SF-1L-2PG36 带塑料盖 With plastic cover D48B-SF-1L-CV-M32 D48B-SF-1L-CV-2M32 D48B-SF-1L-CV-M40 D48B-SF-1L-CV-2M40 D48B-SF-1L-CV-PG29 D48B-SF-1L-CV-2PG29 D48B-SF-1L-CV-PG36 D48B-SF-1L-CV-2PG36	M32 2M32 M40 2M40 PG29 2PG29 PG36 2PG36 M32 2M32 M40 2M40 PG29 2PG29 PG36 2PG36	

DC 塑料外壳 Plastic Hoods & Housings

防护等级 Degree of protection : IP65

外壳 Hoods & Housings	描述 Description	型号 Type	螺纹 Thread	图纸 Drawing
	上壳 侧出线 Hoods, side entry	DC.P-SE-2g-PG16	PG16	
	上壳 顶出线 Hoods, top entry	DC.P-TE-2g-M25	M25	
	下壳 不封底 Housings, bulkhead mounting	DC.P-BK-1L	--	
	电缆接头 用于上壳 Cable gland, for housings	DC.P-M25P(D14-17) DC.P-PG16P(D11. 5-15. 5)	M25 PG16	

常用组合套件 Set general introduction

常用套件快速选型方式 Quick suites selection

芯件选择：芯件针数大于或等于应用回路数使用需求。
 Insert & contact selection: Pin number of insert & contact is bigger than or equal to the circuit number.

参数确认：额定电流、额定电压是否满足实际需求。
 Parameters validation: Whether rated current, rated voltage can meet the actual demand.

上壳选择：进线方式（侧面、顶部）便于走线。
 锁扣方式方便现场操作。
 选择符合电缆大小的壳体螺纹（电缆直径在电缆接头锁紧范围内，参考P129页）。
 Hoods selection: Entry mode (side, top) meets cabling arrangement.
 Locking method facilitate on-site operation.
 The hoods thread should compatible with the size of cabling (cable diameter should within cable joint locking range.) detail on P129.

下壳选择：进线方式与现场走线一致（开孔、表面）。
 锁扣方式与上壳匹配。
 表面安装需确认入口螺纹大小（与上壳方法一致）。
 Housing selection: Entry mode meets cabling arrangement on site (bulkhead mounting, surface mounting).
 Locking method compatible with hoods.
 For surface mounting the entry thread size should be confirmed (the same as that of hoods).

根据以上四点即可确认套件型号。
 The suites type can be determined based on above 4 points.

DA - Series 3 Circuit 400/230V,10A

D3A-SE-2g	D3A-TE-2g	D3A-TE-2g	D3A-TE-2g	D3A-TE-2g
DA-003-M	DA-003-M	DA-003-M	DA-003-M	DA-003-M
DA-003-F	DA-003-F	DA-003-F	DA-003-F	DA-003-F
D3A-BK-1L	D3A-BK-1L	D3A-SF-1L	D3A-BK-SE-1L	D3A-CCT-1L
Side-entry & bulkhead	Top-entry & bulkhead	Top-entry & surface	Top-entry & Side-bulkhead	Top-entry & cable to cable
Type: HDC-DA-003-XX-0001AH	Type: HDC-DA-003-XX-0002AH	Type: HDC-DA-003-XX-0003AH	Type: HDC-DA-003-XX-0004AH	Type: HDC-DA-003-XX-0005AH
Cable gland: M20,PG11,PG13.5	Cable gland: M20,PG11,PG13.5	Cable gland: M20,PG11,PG13.5	Cable gland: M20,PG11,PG13.5	Cable gland: M20,PG11,PG13.5

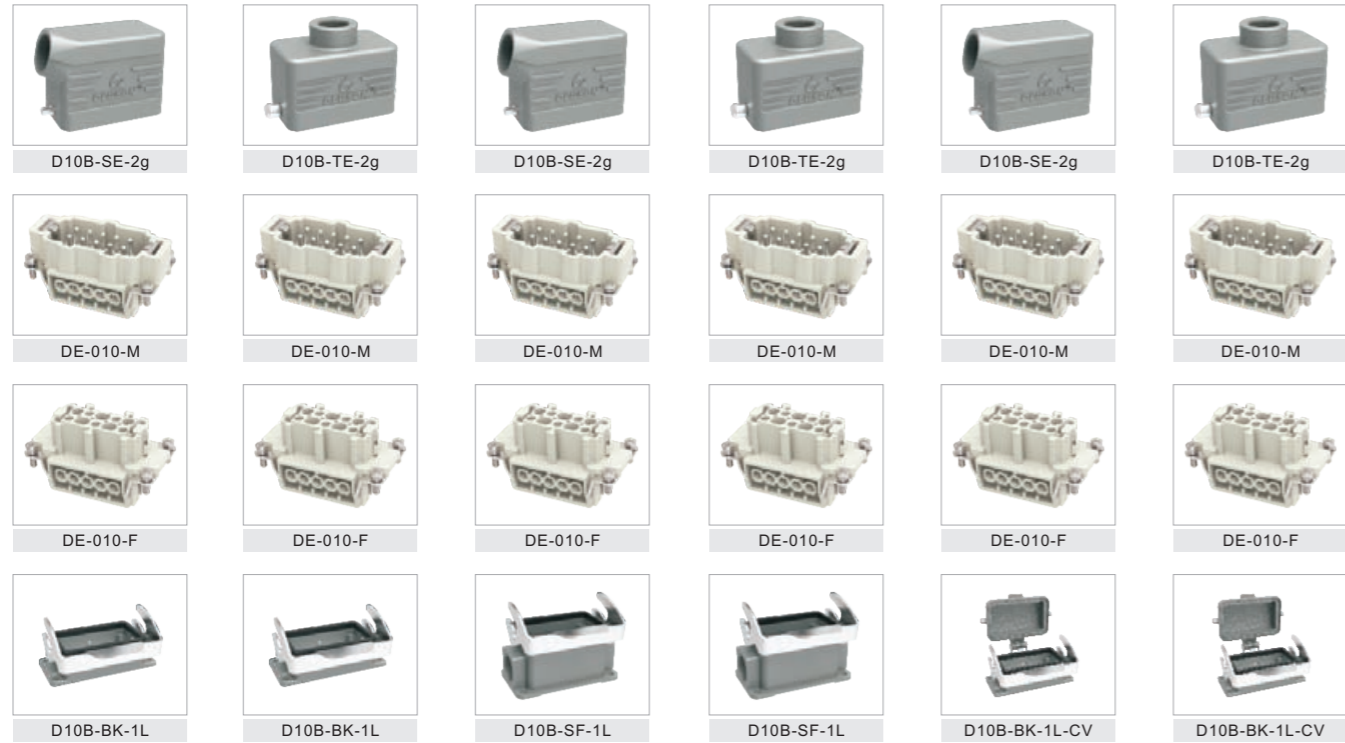
DA - Series 4 Circuit 400/230V,10A

D3A-SE-2g	D3A-TE-2g	D3A-TE-2g	D3A-TE-2g	D3A-TE-2g
DA-004-M	DA-004-M	DA-004-M	DA-004-M	DA-004-M
DA-004-F	DA-004-F	DA-004-F	DA-004-F	DA-004-F
D3A-BK-1L	D3A-BK-1L	D3A-SF-1L	D3A-BK-SE-1L	D3A-CCT-1L
Side-entry & bulkhead	Top-entry & bulkhead	Top-entry & surface	Top-entry & Side-bulkhead	Top-entry & cable to cable
Type: HDC-DA-004-XX-0001AH	Type: HDC-DA-004-XX-0002AH	Type: HDC-DA-004-XX-0003AH	Type: HDC-DA-004-XX-0004AH	Type: HDC-DA-004-XX-0005AH
Cable gland: M20,PG11,PG13.5	Cable gland: M20,PG11,PG13.5	Cable gland: M20,PG11,PG13.5	Cable gland: M20,PG11,PG13.5	Cable gland: M20,PG11,PG13.5

DE - Series 6 Circuit 500V,16A

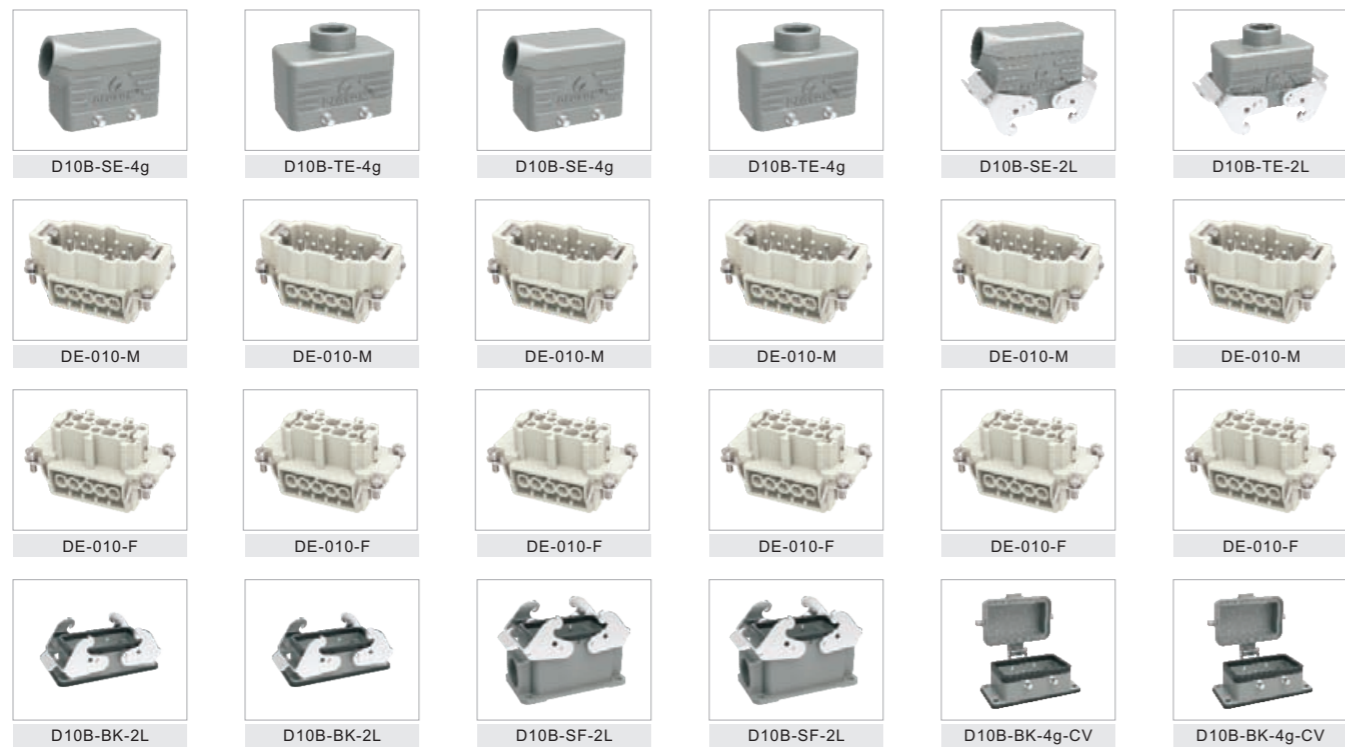
D6B-SE-2g	D6B-TE-2g	D6B-SE-2g	D6B-TE-2g	D6B-SE-2g	D6B-TE-2g
DE-006-M	DE-006-M	DE-006-M	DE-006-M	DE-006-M	DE-006-M
DE-006-F	DE-006-F	DE-006-F	DE-006-F	DE-006-F	DE-006-F
D6B-BK-1L	D6B-BK-1L	D6B-SF-1L	D6B-SF-1L	D6B-BK-1L-CV	D6B-BK-1L-CV
Side-entry & bulkhead	Top-entry & bulkhead	Side-entry & bulkhead	Top-entry & bulkhead	Side-entry & bulkhead cover	Top-entry & bulkhead cover
Type: HDC-DE-006-XX-0001AH	Type: HDC-DE-006-XX-0002AH	Type: HDC-DE-006-XX-0003AH	Type: HDC-DE-006-XX-0004AH	Type: HDC-DE-006-XX-0005AH	Type: HDC-DE-006-XX-0006AH
Cable gland: M20,M25,PG11	Cable gland: M20,M25,PG11	Cable gland: M20,M25,PG11	Cable gland: M20,M25,PG11	Cable gland: M20,M25,PG11	Cable gland: M20,M25,PG11

DE • Series 10 Circuit 500V,16A



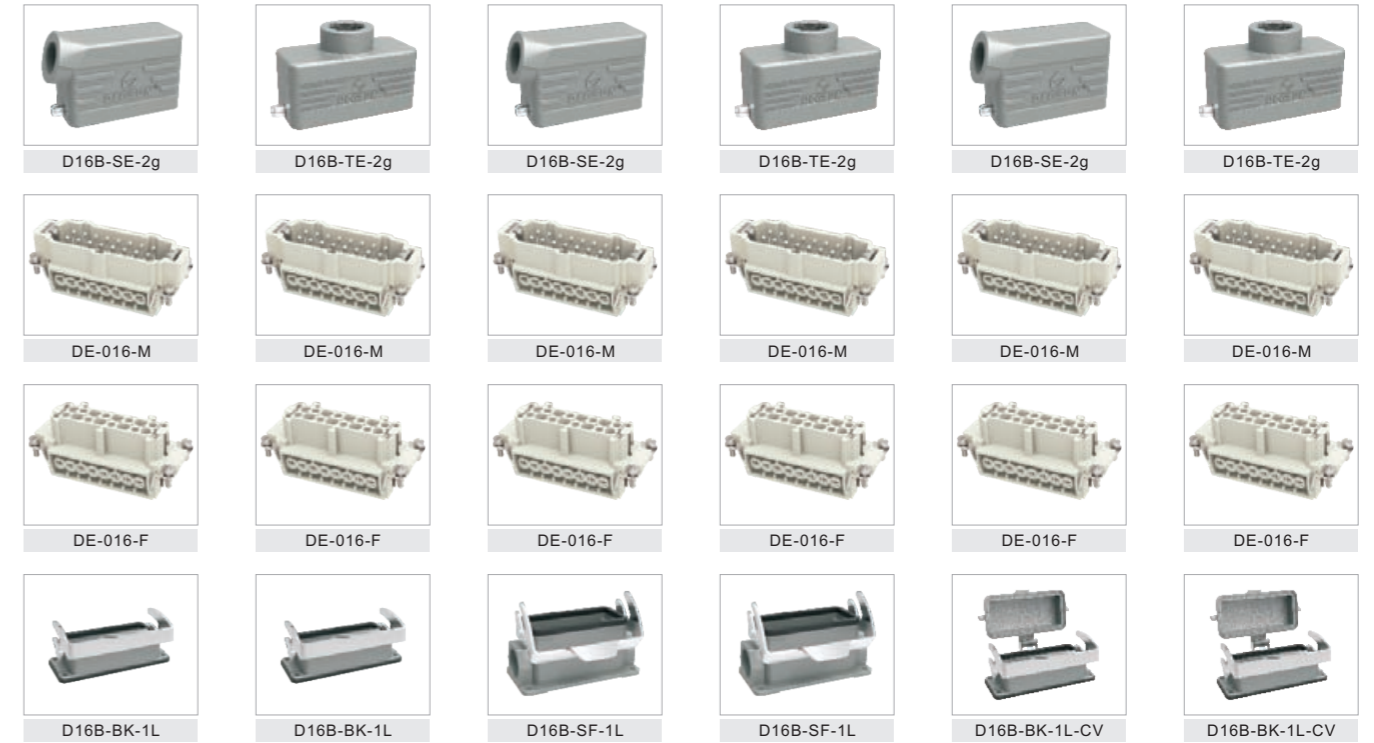
Side-entry & bulkhead	Top-entry & bulkhead	Side-entry & bulkhead	Top-entry & bulkhead	Side-entry & bulkhead cover	Top-entry & bulkhead cover
Type: HDC-DE-010-XX-0001AH	Type: HDC-DE-010-XX-0002AH	Type: HDC-DE-010-XX-0003AH	Type: HDC-DE-010-XX-0004AH	Type: HDC-DE-010-XX-0005AH	Type: HDC-DE-010-XX-0006AH
Cable gland: M20,M25,PG11	Cable gland: M20,M25,PG16	Cable gland: M20,M25,PG16	Cable gland: M20,M25,PG16	Cable gland: M20,M25,PG16	Cable gland: M20,M25,PG16

DE • Series 10 Circuit 500V,16A



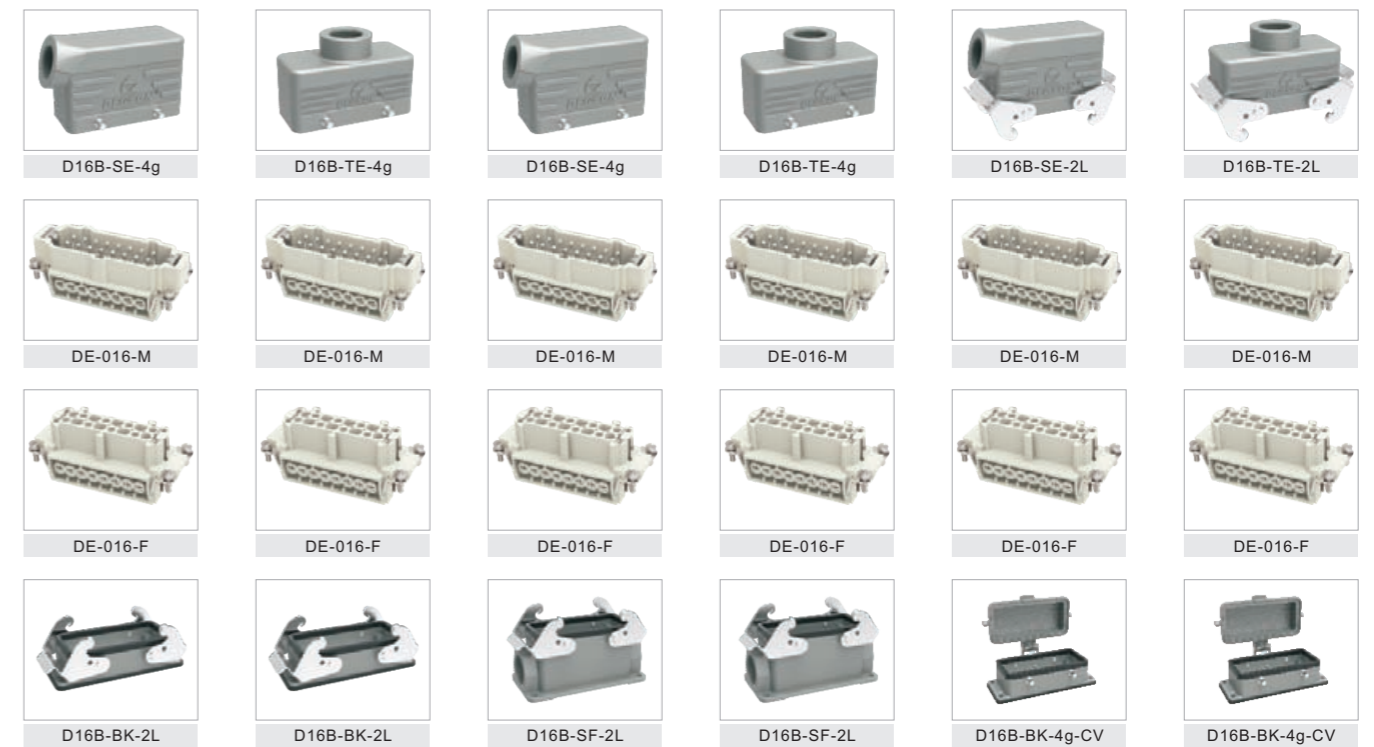
Side-entry & bulkhead	Top-entry & bulkhead	Side-entry & bulkhead	Top-entry & bulkhead	Side-entry & bulkhead cover	Top-entry & bulkhead cover
Type: HDC-DE-010-XX-0011AH	Type: HDC-DE-010-XX-0012AH	Type: HDC-DE-010-XX-0013AH	Type: HDC-DE-010-XX-0014AH	Type: HDC-DE-010-XX-0015AH	Type: HDC-DE-010-XX-0016AH
Cable gland: M20,M25,PG11	Cable gland: M20,M25,PG16	Cable gland: M20,M25,PG16	Cable gland: M20,M25,PG16	Cable gland: M20,M25,PG16	Cable gland: M20,M25,PG16

DE • Series 16 Circuit 500V,16A



Side-entry & bulkhead	Top-entry & bulkhead	Side-entry & bulkhead	Top-entry & bulkhead	Side-entry & bulkhead cover	Top-entry & bulkhead cover
Type: HDC-DE-016-XX-0001AH	Type: HDC-DE-016-XX-0002AH	Type: HDC-DE-016-XX-0003AH	Type: HDC-DE-016-XX-0004AH	Type: HDC-DE-016-XX-0005AH	Type: HDC-DE-016-XX-0006AH
Cable gland: M25,PG21	Cable gland: M25,PG21	Cable gland: M25,PG21	Cable gland: M25,PG21	Cable gland: M25,PG21	Cable gland: M25,PG21

DE • Series 16 Circuit 500V,16A



Side-entry & bulkhead	Top-entry & bulkhead	Side-entry & bulkhead	Top-entry & bulkhead	Side-entry & bulkhead cover	Top-entry & bulkhead cover
Type: HDC-DE-016-XX-0011AH	Type: HDC-DE-016-XX-0012AH	Type: HDC-DE-016-XX-0013AH	Type: HDC-DE-016-XX-0014AH	Type: HDC-DE-016-XX-0015AH	Type: HDC-DE-016-XX-0016AH
Cable gland: M25,PG21	Cable gland: M25,PG21	Cable gland: M25,PG21	Cable gland: M25,PG21	Cable gland: M25,PG21	Cable gland: M25,PG21

DE • Series 24 Circuit 500V,16A



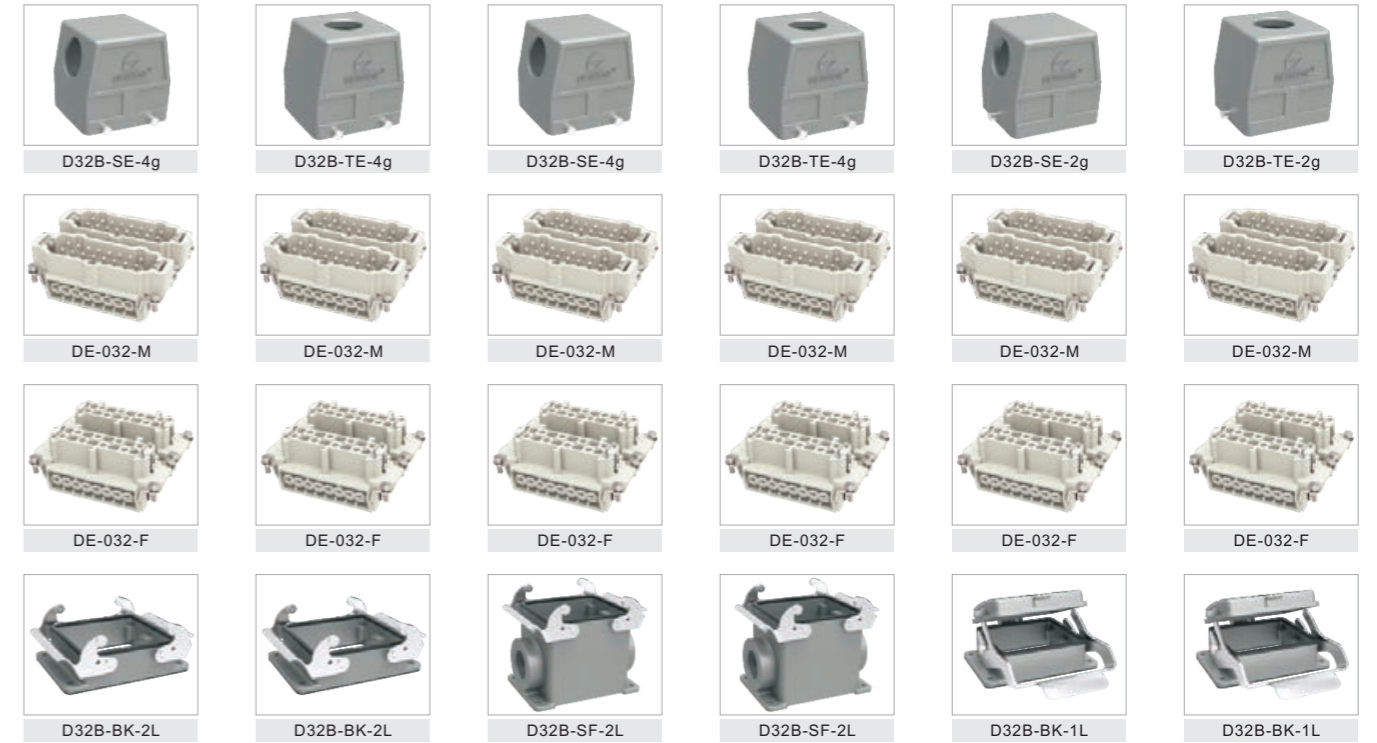
Side-entry & bulkhead Type: HDC-DE-024-XX-0001AH Cable gland: M25,PG21	Top-entry & bulkhead Type: HDC-DE-024-XX-0002AH Cable gland: M25,PG21	Side-entry & bulkhead Type: HDC-DE-024-XX-0003AH Cable gland: M25,PG21	Top-entry & bulkhead Type: HDC-DE-024-XX-0004AH Cable gland: M25,PG21	Side-entry & bulkhead cover Type: HDC-DE-024-XX-0005AH Cable gland: M25,PG21	Top-entry & bulkhead cover Type: HDC-DE-024-XX-0006AH Cable gland: M25,PG21
---	--	---	--	---	--

DE • Series 24 Circuit 500V,16A



Side-entry & bulkhead Type: HDC-DE-024-XX-0011AH Cable gland: M25,PG21	Top-entry & bulkhead Type: HDC-DE-024-XX-0012AH Cable gland: M25,PG21	Side-entry & bulkhead Type: HDC-DE-024-XX-0013AH Cable gland: M25,PG21	Top-entry & bulkhead Type: HDC-DE-024-XX-0014AH Cable gland: M25,PG21	Side-entry & bulkhead cover Type: HDC-DE-024-XX-0015AH Cable gland: M25,PG21	Top-entry & bulkhead cover Type: HDC-DE-024-XX-0016AH Cable gland: M25,PG21
---	--	---	--	---	--

DE • Series 32 Circuit 500V,16A



Side-entry & bulkhead Type: HDC-DE-032-XX-0001AH Cable gland: M32,PG29	Top-entry & bulkhead Type: HDC-DE-032-XX-0002AH Cable gland: M32,PG29	Side-entry & bulkhead Type: HDC-DE-032-XX-0003AH Cable gland: M32,PG29	Top-entry & bulkhead Type: HDC-DE-032-XX-0004AH Cable gland: M32,PG29	Side-entry & bulkhead Type: HDC-DE-032-XX-0005AH Cable gland: M32,PG29	Top-entry & bulkhead Type: HDC-DE-032-XX-0006AH Cable gland: M32,PG29
---	--	---	--	---	--

DE • Series 48 Circuit 500V,16A



Side-entry & bulkhead Type: HDC-DE-048-XX-0001AH Cable gland: M32,M40,PG29	Top-entry & bulkhead Type: HDC-DE-048-XX-0002AH Cable gland: M32,M40,PG29	Side-entry & bulkhead Type: HDC-DE-048-XX-0003AH Cable gland: M32,M40,PG29	Top-entry & bulkhead Type: HDC-DE-048-XX-0004AH Cable gland: M32,M40,PG29
---	--	---	--

外壳安装尺寸 Housings Mounting Dimensions

顶部进线 Top Entry							侧面进线 Side Entry							
1 Locking levers														
2 Locking levers														
Drawing(mm)														
Series	A	B	H	M	PG	Part number		A	B	H	M	PG	Part number	
						2bolts	4bolts						2bolts	4bolts
D3A	28	27	60	M20	PG11	D3A-TE-2g		28	27	54.5	M20	PG11	D3A-SE-2g	
D10A	63	29.5	47	M20	PG13.5	D10A-TE-2g		63	29.5	51.5	M20	PG13.5	D10A-SE-2g	
	63	36	67.5	M25	PG16	D10A-TEH-2g		63	36	67.5	M25	PG16	D10A-SEH-2g	
D16A	79.5	29.5	47	M20	PG13.5	D16A-TE-2g		79.5	29.5	61.5	M20	PG13.5	D16A-SE-2g	
	79.5	36	70.5	M25	PG16	D16A-TEH-2g		79.5	36	70.5	M25	PG16	D16A-SEH-2g	
D32A	82	56	79	M32	PG29		D32A-TEH-4g	82	56	60	M25	PG21		D32A-SE-4g
								82	56	79	M32	PG29		D32A-SEH-4g
D6B	60	43	40	M20	PG13.5	D6B-TE-2g		60	43	43	M20	PG13.5	D6B-SE-2g	
	60	43	72	M32	PG21	D6B-TEH-2g		60	43	72	M32	PG21	D6B-SEH-2g	
D10B	73	43	45	M25	PG16	D10B-TE-2g	D10B-TE-4g	73	43	57	M25	PG16	D10B-SE-2g	D10B-SE-4g
	73	43	72	M32	PG21	D10B-TEH-2g	D10B-TEH-4g	73	43	72	M32	PG21	D10B-SEH-2g	D10B-SEH-4g
D16B	93.5	43	45	M25	PG21	D16B-TE-2g	D16B-TE-4g	93.5	43	62.5	M25	PG21	D16B-SE-2g	D16B-SE-4g
	93.5	43	76	M32	PG29	D16B-TEH-2g	D16B-TEH-4g	93.5	43	76	M32	PG29	D16B-SEH-2g	D16B-SEH-4g
D24B	120	43	55	M32	PG21	D24B-TE-2g	D24B-TE-4g	120	43	62.5	M32	PG21	D24B-SE-2g	D24B-SE-4g
	120	43	76	M40	PG29	D24B-TEH-2g	D24B-TEH-4g	120	43	76	M40	PG29	D24B-SEH-2g	D24B-SEH-4g
D32B	94	82.5	94	M40	PG36	D32B-TE-2g	D32B-TE-4g	94	82.5	94	M40	PG36	D32B-SE-2g	D32B-SE-4g
D48B	132	90	98	M50	PG42	D48B-TE-2g		132	90	98	M50	PG42	D48B-SE-2g	

外壳安装尺寸 Housings Mounting Dimensions

开孔安装 Bulkhead Mounting						表面安装 Surface Mounting										
1 Locking levers																
2 Locking levers																
Drawing(mm)																
Series	A	B	C	E	H	Part number		A	B	C	E	H	M	PG	Part number	
						1 Locking levers	2 Locking levers								1 Locking levers	2 Locking levers
D3A	28	40		28	23	D3A-BK-1L		30	40		57	27	M20	PG11	D3A-SF-1L	
	28	40		28	23	D3A-BK-1L-MCV										
D10A	70	81	17.5	29	26	D10A-BK-1L		48	75	40	50	52	M20	PG16	D10A-SF-1L	
D16A	86	96	17.5	29	26	D16A-BK-1L		64	80	40	50	57	M25	PG16	D16A-SF-1L	
D32A	92	102	42	56	28.5		D32A-BK-2L	94	106	46	57	82	M32	PG21		D32A-SF-2L
D6B	70	80	32	43.5	28.5	D6B-BK-1L		70	82	40	52	57	M25	PG16	D6B-SF-1L	
								70	82	45	57	74	M32	PG21	D6B-SFH-1L	
D10B	83	93	32	43.5	28.5	D10B-BK-1L		82	94	40	52	54	M25	PG16	D10B-SF-1L	D10B-SF-2L
	83	93	32	43.5	28.5		D10B-BK-2L	82	94	45	57	81	M32	PG21	D10B-SFH-1L	D10B-SFH-2L
D16B	103	113	32	43.5	28.5	D16B-BK-1L		105	117	45	57	56	M25	PG21	D16B-SF-1L	D16B-SF-2L
	103	113	32	43.5	28.5		D16B-BK-2L	105	117	45	57	81	M32	PG29	D16B-SFH-1L	D16B-SFH-2L
D24B	130	140	32	43.5	28.5	D24B-BK-1L		132	144	45	57	56	M25	PG21	D24B-SF-1L	D24B-SF-2L
	130	140	32	43.5	28.5		D24B-BK-2L	132	144	45	57	81	M25	PG21	D24B-SFH-1L	D24B-SFH-2L
D32B	110	124	65	90	33	D32B-BK-1L		112	125	67	87	90	M40	PG36	D32B-SF-1L	D32B-SF-2L
	110	124	65	90	33		D32B-BK-2L									
D48B	148	165	70	96	40	D48B-BK-1L		111	141	106	120	99	M40	PG36	D48B-SF-1L	

冷压针 Crimp Contacts

(5A) Crimp contacts

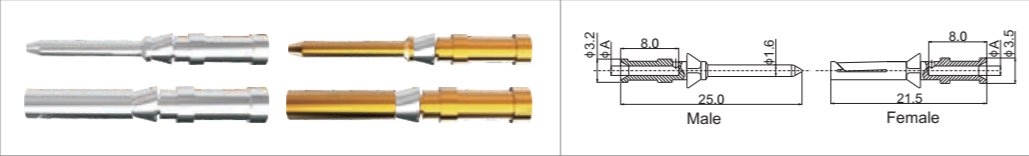
Material: Copper alloy
Contact resistance $\leq 3m\Omega$
Matching: DM inserts
Surface: Gold/silver plated
Terminal: Crimp connection



Contacts, silver-plated		Contacts, gold plated		(ϕA)	Wire gauge		Recommended stripping length
Male Contacts	Female Contacts	Male Contacts	Female Contacts		(mm ²)	(AWG)	
5A-SM-0.25	5A-SF-0.25	5A-GM-0.25	5A-GF-0.25	0.64	0.09-0.25	28-24	5mm
5A-SM-0.33	5A-SF-0.33	5A-GM-0.33	5A-GF-0.33	0.9	0.25-0.33	24-22	5mm
5A-SM-0.52	5A-SF-0.52	5A-GM-0.52	5A-GF-0.52	1.12	0.33-0.52	22-20	5mm

(10A) Crimp contacts

Material: Copper alloy
Contact resistance $\leq 3m\Omega$
Matching: DDDDD, DM, DK, DQ inserts
Surface: Gold/silver plated
Terminal: Crimp connection



Contacts, silver-plated		Contacts, gold plated		(ϕA)	Wire gauge		Recommended stripping length
Male Contacts	Female Contacts	Male Contacts	Female Contacts		(mm ²)	(AWG)	
10A-SM-0.37	10A-SF-0.37	10A-GM-0.37	10A-GF-0.37	0.9	0.14-0.37	26-22	8mm
10A-SM-0.5	10A-SF-0.5	10A-GM-0.5	10A-GF-0.5	1.1	0.50	20	8mm
10A-SM-0.75	10A-SF-0.75	10A-GM-0.75	10A-GF-0.75	1.3	0.75	18	8mm
10A-SM-1.0	10A-SF-1.0	10A-GM-1.0	10A-GF-1.0	1.45	1.00	18	8mm
10A-SM-1.5	10A-SF-1.5	10A-GM-1.5	10A-GF-1.5	1.75	1.50	16	8mm
10A-SM-2.5	10A-SF-2.5	10A-GM-2.5	10A-GF-2.5	2.25	2.50	14	6mm

(16A) Crimp contacts

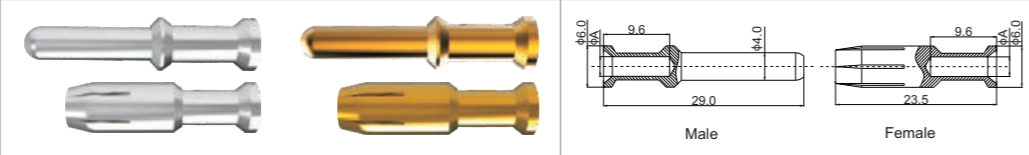
Material: Copper alloy
Contact resistance $\leq 1m\Omega$
Matching: DA, DE, DEE, DM, DK inserts
Surface: Gold/silver plated
Terminal: Crimp connection



Contacts, silver-plated		Contacts, gold plated		(ϕA)	Wire gauge		Recommended stripping length
Male Contacts	Female Contacts	Male Contacts	Female Contacts		(mm ²)	(AWG)	
16A-SM-0.37	16A-SF-0.37	16A-GM-0.37	16A-GF-0.37	0.9	0.14-0.37	26-22	7.5mm
16A-SM-0.5	16A-SF-0.5	16A-GM-0.5	16A-GF-0.5	1.1	0.50	20	7.5mm
16A-SM-0.75	16A-SF-0.75	16A-GM-0.75	16A-GF-0.75	1.3	0.75	18	7.5mm
16A-SM-1.0	16A-SF-1.0	16A-GM-1.0	16A-GF-1.0	1.45	1.00	18	7.5mm
16A-SM-1.5	16A-SF-1.5	16A-GM-1.5	16A-GF-1.5	1.75	1.50	16	7.5mm
16A-SM-2.5	16A-SF-2.5	16A-GM-2.5	16A-GF-2.5	2.25	2.50	14	7.5mm
16A-SM-4.0	16A-SF-4.0	16A-GM-4.0	16A-GF-4.0	2.85	4.00	12	7.5mm

(40A) Crimp contacts

Material: Copper alloy
Contact resistance $\leq 0.3m\Omega$
Matching: DM, DK inserts
Surface: Gold/silver plated
Terminal: Crimp connection



Contacts, silver-plated		Contacts, gold plated		(ϕA)	Wire gauge		Recommended stripping length
Male Contacts	Female Contacts	Male Contacts	Female Contacts		(mm ²)	(AWG)	
40A-SM-1.5	40A-SF-1.5	40A-GM-1.5	40A-GF-1.5	1.75	1.50	16	9.0mm
40A-SM-2.5	40A-SF-2.5	40A-GM-2.5	40A-GF-2.5	2.25	2.50	14	9.0mm
40A-SM-4.0	40A-SF-4.0	40A-GM-4.0	40A-GF-4.0	2.85	4.0	12	9.5mm
40A-SM-6.0	40A-SF-6.0	40A-GM-6.0	40A-GF-6.0	3.50	6.0	10	9.5mm

电缆接头选型指南 Cable Connector Part Number Guidelines

适用于标准电缆的接头规格 Surtable for standard cable connector specifications

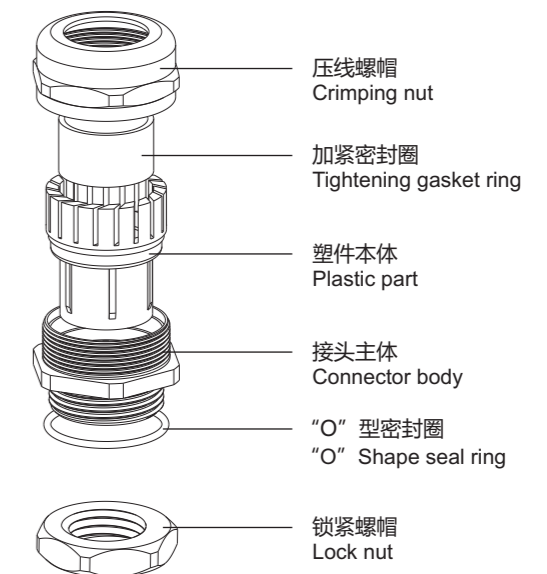
线径 Wire gauge	芯数 Number of pins	电缆直径范围 ϕ Cable diameter range	M制	PG制
0.5mm ²	4	6.7-9.7	20	11,13.5
	6	7.6-10.6	20	11,13.5
	10	9.4-12.8	20,25	13.5,16
	16	10.7-13.9	20,25	16,21
	24	13.5-16.7	25	21
	35	16-18.6	25,32	21,29
AWG20	40	16.6-19.2	25,32	21,29
	61	20.3-23.1	32	29

线径 Wire gauge	芯数 Number of pins	电缆直径范围 ϕ Cable diameter range	M制	PG制
0.75mm ²	4	7.9-10.3	20	11,13.5
	6	8.9-12.3	20,25	13.5,16
	10	10.4-13.8	20,25	16,21
	18	13-16.2	25	21
	25	15.9-18.5	25,32	21,29
	32	17.1-19.7	25,32	21,29
AWG18	40	19-21.4	32	29
	50	21.3-24.1	32	29
	61	22.6-25.4	32,40	29,36

线径 Wire gauge	芯数 Number of pins	电缆直径范围 ϕ Cable diameter range	M制	PG制
1.0mm ²	4	8.4-10.7	20	11,13.5
	6	9.2-12.6	20,25	13.5,16
	10	11-14.4	20,25	16,21
	16	13-16.2	25	21
	24	16.5-19.1	25,32	21,29
	34	19.4-21.8	32	29
AWG16-18	48	22-24.8	32	29
	61	24.5-27.2	32,40	29,36

PG制螺纹与公制(M)螺纹对照表 Cross reference form PG thread to Metric thread

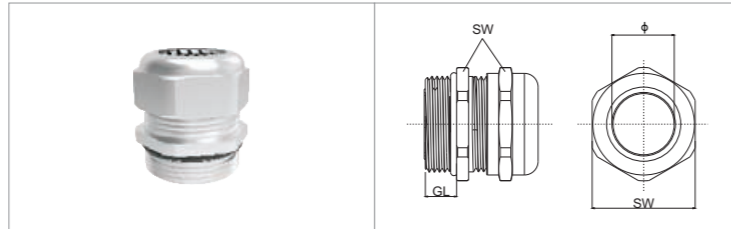
PG	Metric
PG 11	
PG 13.5	M20
PG 16	
PG 21	M25
PG 29	M32
PG 36	M40
PG 42	M50
PG 48	M63



电缆接头 Cable Glands

Metal cable gland

Material: Brass nickel plated
 Seal material: NBR
 Degree of protection: IP68
 Press seal material: PA
 Temperature range: -40~100°C



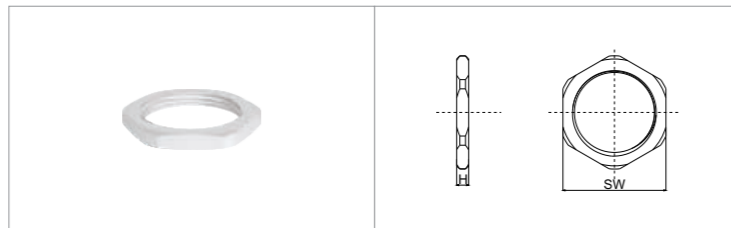
Unit:mm

PG thread	Clamp range(φ)	SW	GL	Type
PG7	3-6.5	14	6	DDL-PG7M
PG9	4-8	17	7	DDL-PG9M
PG11	5-10	20	8	DDL-PG11M
PG13.5	6-12	22	8	DDL-PG13.5M
PG16	8-14	24	8	DDL-PG16M
PG21	13-18	30	8	DDL-PG21M
PG29	18-25	40	9	DDL-PG29M
PG36	22-32	50	10	DDL-PG36M
PG42	31-38	58	10	DDL-PG42M
PG48	37-44	64	12	DDL-PG48M

Metric	Clamp range(φ)	SW	GL	Type
M12x1.5	3-6.5	14	6	DDL-M12M
M16x1.5	5-10	18	7	DDL-M16M
M20x1.5	6-12	22	8	DDL-M20M
M25x1.5	13-18	30	8	DDL-M25M
M32x1.5	18-25	40	9	DDL-M32M
M40x1.5	22-32	50	10	DDL-M40M
M50x1.5	30-38	58	10	DDL-M50M
M63x1.5	37-44	68	12	DDL-M63M

Metal lock nut

Material: Brass nickel plated
 Temperature range: -40~100°C



Unit:mm

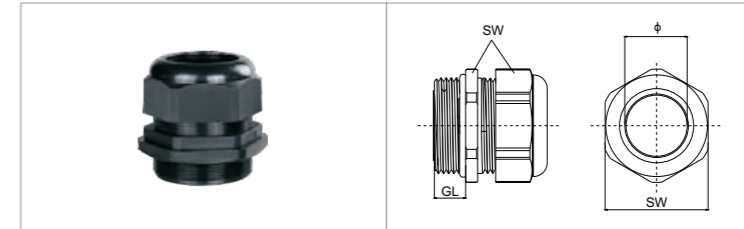
PG thread	Thickness(H)	SW	Type
PG7	2.5	14	DLM-PG7M
PG9	2.8	18	DLM-PG9M
PG11	3.0	20	DLM-PG11M
PG13.5	3.0	22	DLM-PG13.5M
PG16	3.0	24	DLM-PG16M
PG21	3.5	31	DLM-PG21M
PG29	4.0	40	DLM-PG29M
PG36	5.0	52	DLM-PG36M
PG42	5.0	58	DLM-PG42M
PG48	5.5	64	DLM-PG48M

Metric	Thickness(H)	SW	Type
M12x1.5	2.5	14	DLM-M12M
M16x1.5	2.8	18	DLM-M16M
M20x1.5	3.0	22	DLM-M20M
M25x1.5	3.0	27	DLM-M25M
M32x1.5	3.5	35	DLM-M32M
M40x1.5	4.5	43	DLM-M40M
M50x1.5	5.0	55	DLM-M50M
M63x1.5	5.5	68	DLM-M63M

电缆接头 Cable Glands

Plastics Cable gland

Material: Nylon
 Seal material: NBR
 Degree of protection: IP68
 Press seal material: PA
 Temperature range: -40~100°C



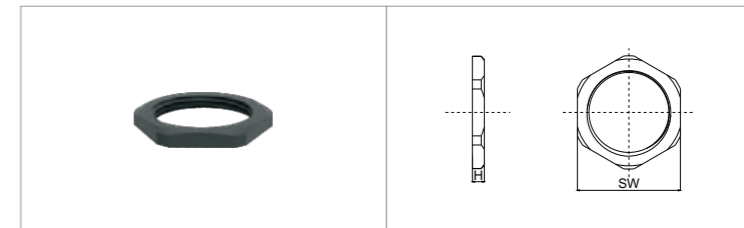
Unit:mm

PG thread	Clamp range(φ)	SW	GL	Type
PG7	3-6.5	15	9.0	DDL-PG7P
PG9	4-8	19	9.0	DDL-PG9P
PG11	5-10	22	9.0	DDL-PG11P
PG13.5	6-12	24	9.0	DDL-PG13.5P
PG16	7-12	27	10	DDL-PG16P
PG21	13-18	33	12	DDL-PG21P
PG29	18-25	42	12	DDL-PG29P
PG36	22-32	52	16	DDL-PG36P
PG42	32-38	59	18	DDL-PG42P
PG48	37-44	64	15	DDL-PG48P

Metric	Clamp range(φ)	SW	GL	Type
M12x1.5	3-6.5	15	9	DDL-M12P
M16x1.5	4-8	19	9	DDL-M16P
M20x1.5	6-12	24	9	DDL-M20P
M25x1.5	11-15	32	12	DDL-M25P
M32x1.5	16-21	35	12	DDL-M32P
M40x1.5	22-32	51	16	DDL-M40P
M50x1.5	32-38	60	18	DDL-M50P
M63x1.5	37-44	65	15	DDL-M63P

Plastics lock nut

Material: Nylon
 Temperature range: -40~100°C



Unit:mm

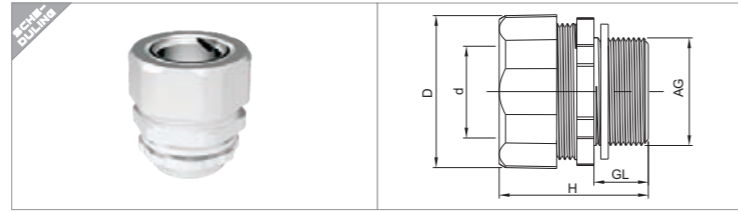
PG thread	Thickness(H)	SW	Type
PG7	4.5	18	DLM-PG7P
PG9	4.5	22	DLM-PG9P
PG11	5.0	24	DLM-PG11P
PG13.5	5.0	27	DLM-PG13.5P
PG16	5.5	30	DLM-PG16P
PG21	6.0	35	DLM-PG21P
PG29	7.0	45	DLM-PG29P
PG36	8.0	58	DLM-PG36P
PG42	8.0	65	DLM-PG42P
PG48	8.0	70	DLM-PG48P

Metric	Thickness(H)	SW	Type
M12x1.5	4.5	18	DLM-M12P
M16x1.5	5.0	22	DLM-M16P
M20x1.5	5.0	27	DLM-M20P
M25x1.5	5.2	33	DLM-M25P
M32x1.5	6.0	38	DLM-M32P
M40x1.5	8.0	52	DLM-M40P
M50x1.5	8.0	60	DLM-M50P
M63x1.5	8.0	73	DLM-M63P

电缆接头 Cable Glands

Outer thread tube connector

Material: Zinc alloy, Zinc plated or Chromium plated
 Specialty: one end is connector to flexible, the other thread end connected to switch chest or equipment, the structure is compact, the surface is a nitroten



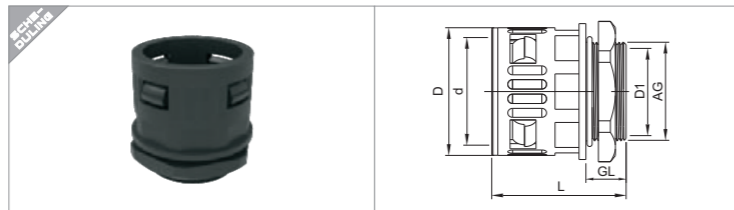
Unit:mm

PG thread	Fits tubing size(d)	GL	D	H	Type
PG9	10	8.5	26	30	DBL-PG9M
PG11	12	10.5	27.5	32	DBL-PG11M
PG13.5	15	11.5	31.5	34	DBL-PG13.5M
PG16	15	12.5	32	34	DBL-PG16M
PG21	20	13.5	38	37	DBL-PG21M
PG29	25	15	45.5	44	DBL-PG29MS
PG29	32	14	55	52	DBL-PG29M
PG36	38	17	62	51	DBL-PG36M
PG42	38	17	62	51	DBL-PG42M
PG48	51	19	77.5	56	DBL-PG48M

Metric	Fits tubing size(d)	GL	D	H	Type
M16x1.5	8	8	24	28	DBL-M16MS
M16x1.5	10	8	25.5	30	DBL-M16M
M20x1.5	12	10	27.5	32	DBL-M20M
M25x1.5	20	12	37.5	37	DBL-M25M
M32x1.5	20	12.5	37.5	37	DBL-M32MS
M32x1.5	25	15	46	41	DBL-M32M
M36x2.0	25	13	45	44	DBL-M36M
M40x1.5	32	15	55	47	DBL-M40M

Quick tube connector

Material: Nylon 6
 Temperature range: -40~120°C



Unit:mm

PG thread	Fits tubing size(d)	GL	D1	D	H	Type
PG7	AD10.0	9.5	7.5	17.0	34.5	DCP-PG9P
PG9	AD13.0	9.5	11.5	20.0	34.5	DCP-PG9P
PG11	AD15.8	9.5	14.0	23.0	36.0	DCP-PG11P
PG13.5	AD18.5	11.0	16.0	26.0	39.0	DCP-PG13.5P
PG16	AD21.2	13.0	18.0	29.5	44.0	DCP-PG16P
PG21	AD28.5	13.0	23.5	37.0	47.0	DCP-PG21P
PG29	AD34.5	11.5	30.5	43.5	47.0	DCP-PG29P
PG36	AD42.5	13.5	40.0	51.0	52.0	DCP-PG36P

Metric	Fits tubing size(d)	GL	D1	D	H	Type
M12x1.5	AD10.0	10.0	8.0	17.0	34.5	DCP-M12P
M16x1.5	AD13.0	9.5	11.5	20.0	34.5	DCP-M16P
M18x1.5	AD15.8	9.5	14.0	23.0	36.0	DCP-M18P
M20x1.5	AD18.5	11.0	16.0	26.0	39.0	DCP-M20PS
M20x1.5	AD21.2	13.0	15.0	29.5	44.0	DCP-M20P
M25x1.5	AD21.2	13.0	18.0	29.5	44.5	DCP-M25PS
M25x1.5	AD28.5	13.0	20.5	37.0	47.0	DCP-M25P
M32x1.5	AD28.5	13.0	24.0	37.0	47.0	DCP-M32P
M40x1.5	AD34.5	11.0	30.0	43.5	48.0	DCP-M40PS
M40x1.5	AD42.5	13.5	33.5	51.0	52.0	DCP-M40P
M50x1.5	AD54.5	13.5	42.5	63.5	53.5	DCP-M50P
M63x1.5	AD54.5	14.0	55.0	63.5	53.5	DCP-M635P

工具 Tools



Crimping tool

Wire gauge:(TL1)0.14~4.0mm²
 Order NO:TL1-4.0



Removal tool (10A)

Matching:DD,DDD,DM
 Order NO:RT-10A



Removal tool (16A)

Matching:DEE,DM
 Order NO:RT-16A



Removal tool (40A)

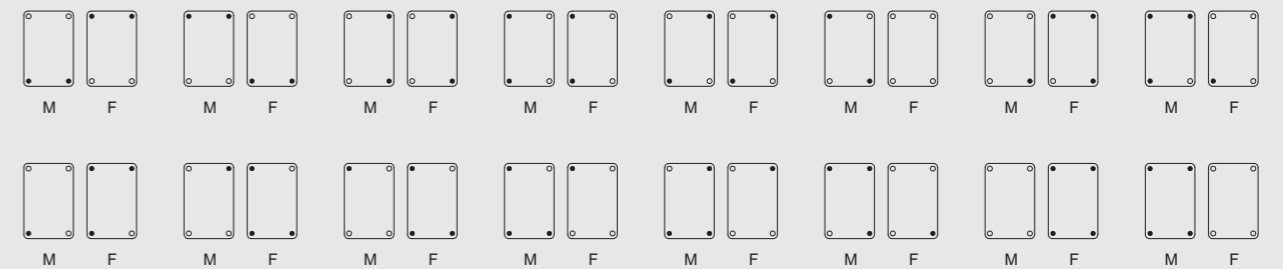
Matching:DM
 Order NO:RT-40A

编码 Coding

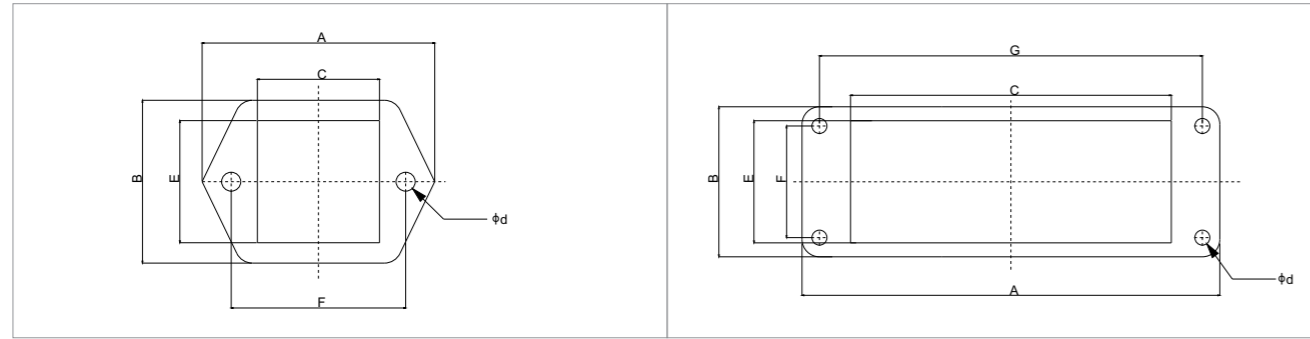
用导向销和导向孔编号 Coding system with guide pins bushes

导向孔 Guide bush	型号 Type	规格尺寸 Dimension
	DBM1-DCRF-M3-00AH	
	DBM1-DCRM-M3-00AH	

适用于可安装一个插芯或框架的外壳 For hoods housings with one insert one frame



外壳安装尺寸 Housings Mounting Dimensions



Housings type	Mounting type	Dimensions(mm)						
		A	B	C	E	F	G	ϕd
D3A	Bulkhead	40	28	21	21	30	-	3.3
	Surface	40	28	-	-	30	-	3.3
D10A	Bulkhead	81	29.5	57.5	24	17.5	70	3.6
	Surface	80	50	-	-	40	48	4.5
D16A	Bulkhead	96	29.5	73.7	24	17.5	86	3.6
	Surface	96	50	-	-	40	64	4.5
D32A	Bulkhead	102	56	74.2	48.4	42	92	4.3
	Surface	106	57	-	-	46	94	5.5
D6B	Bulkhead	80	43	52.2	35	32	70	4.3
	Surface	82	52	-	-	40	70	5.5
D10B	Bulkhead	93	43	65.2	35	32	83	4.3
	Surface	94	52	-	-	40	82	5.5
D16B	Bulkhead	113	43	85.5	35	32	103	4.3
	Surface	117	57	-	-	45	105	5.5
D24B	Bulkhead	140	43	112.2	35	32	130	4.3
	Surface	144	57	-	-	45	132	5.5
D32B	Bulkhead	124	79	85.5	71	65	110	5.5
	Surface	124.5	81	-	-	67	112	5.5
D48B	Bulkhead	165	90	124	82	70	148	7
	Surface	132	120	-	-	106	111	6.5

应用领域

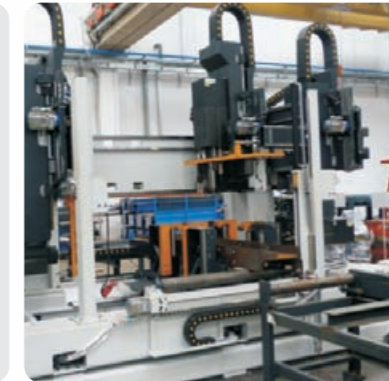
DEGSON高松连接器广泛用于机器人、工业自动化、热流道模具、数控设备、纺织机械、轨道交通、电力行业、能源、风力发电等各种需要电气和信号连接的设备中；能够满足不同领域、不同场合的电气或信号的连接要求。

FIELD OF APPLICATION

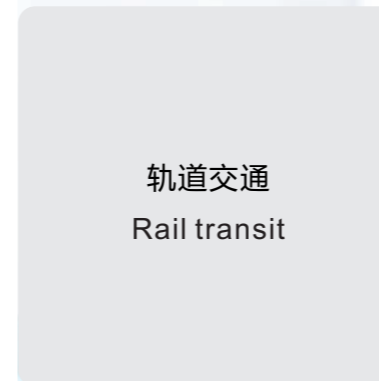
DEGSON connectors are widely used in hot runner mold, robot, industrial automation, CNC equipment, textile machinery, rail transit, electric power industry, energy, wind power generation and so on various equipments requiring electrical and signal connection; it can meet electrical or signal connection requirement of different fields and situations.



交通技术
Transportation technology



数控设备
CNC equipment



轨道交通
Rail transit



工业自动化
Industrial automation



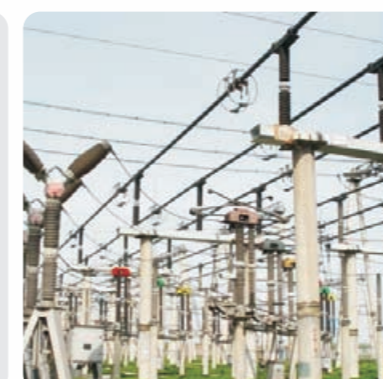
能源
Energy



机器人
Robot



电力行业
Electric power



热流道模具
Hot runner mold

